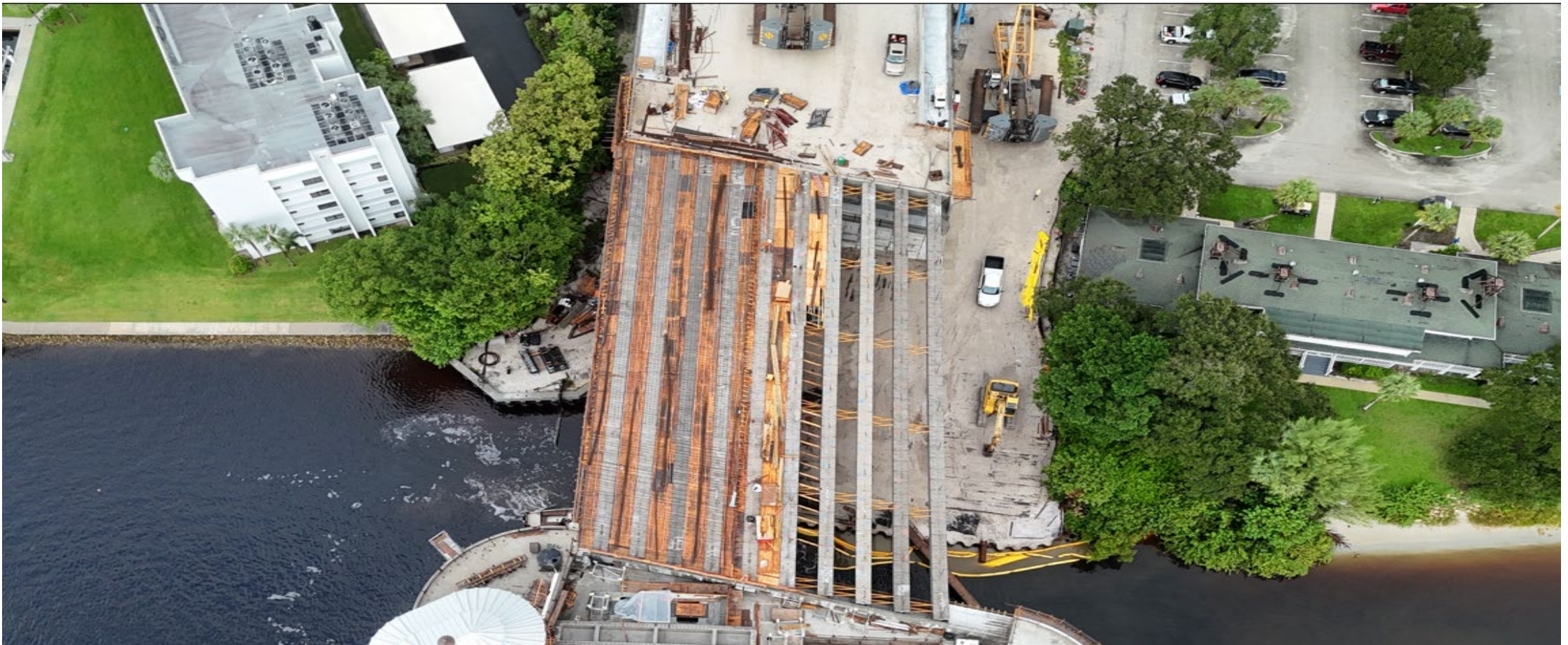


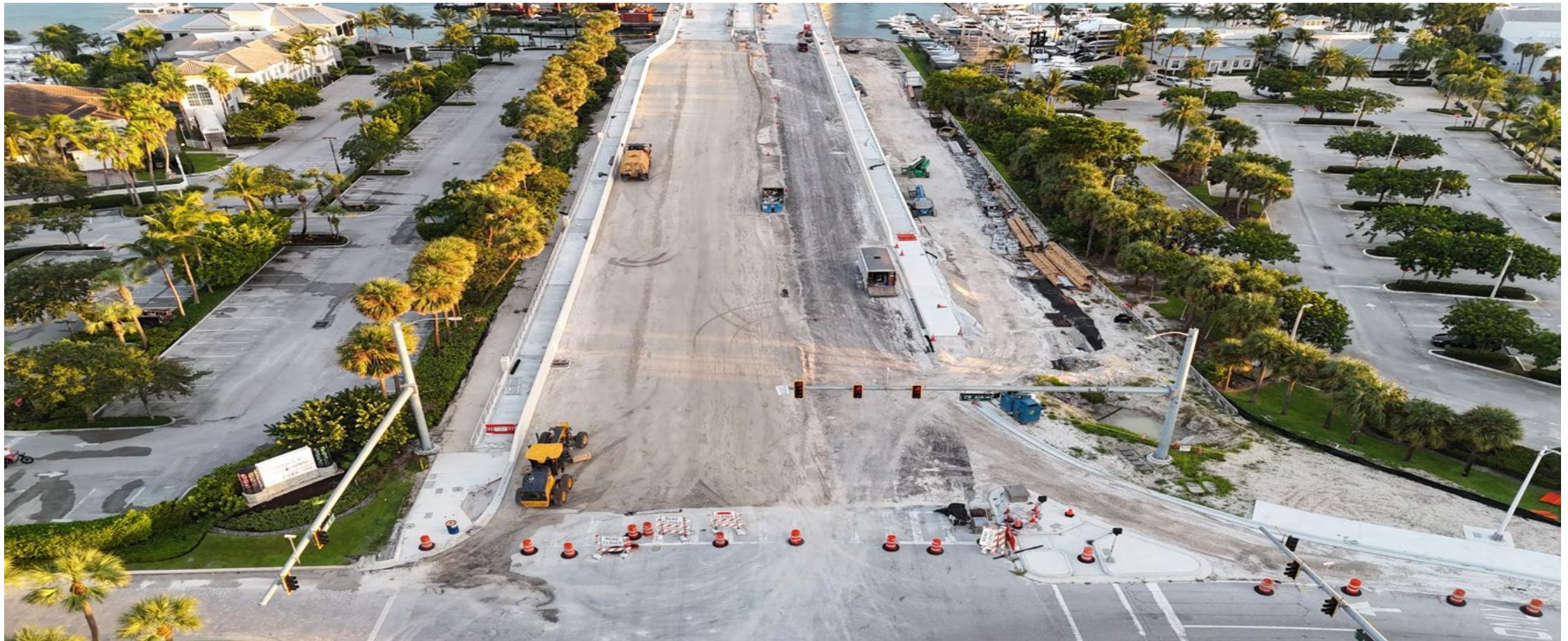
STATUS OF REMAINING MILESTONES TO OPEN WEST SIDE OF BRIDGE TO TRAFFIC

POUR CONCRETE DECK FOR SPAN 5, north side of bascule bridge



STATUS OF REMAINING MILESTONES TO OPEN WEST SIDE OF BRIDGE TO TRAFFIC

PAVE THE BRIDGE APPROACHES, south side



STATUS OF REMAINING MILESTONES TO OPEN WEST SIDE OF BRIDGE TO TRAFFIC



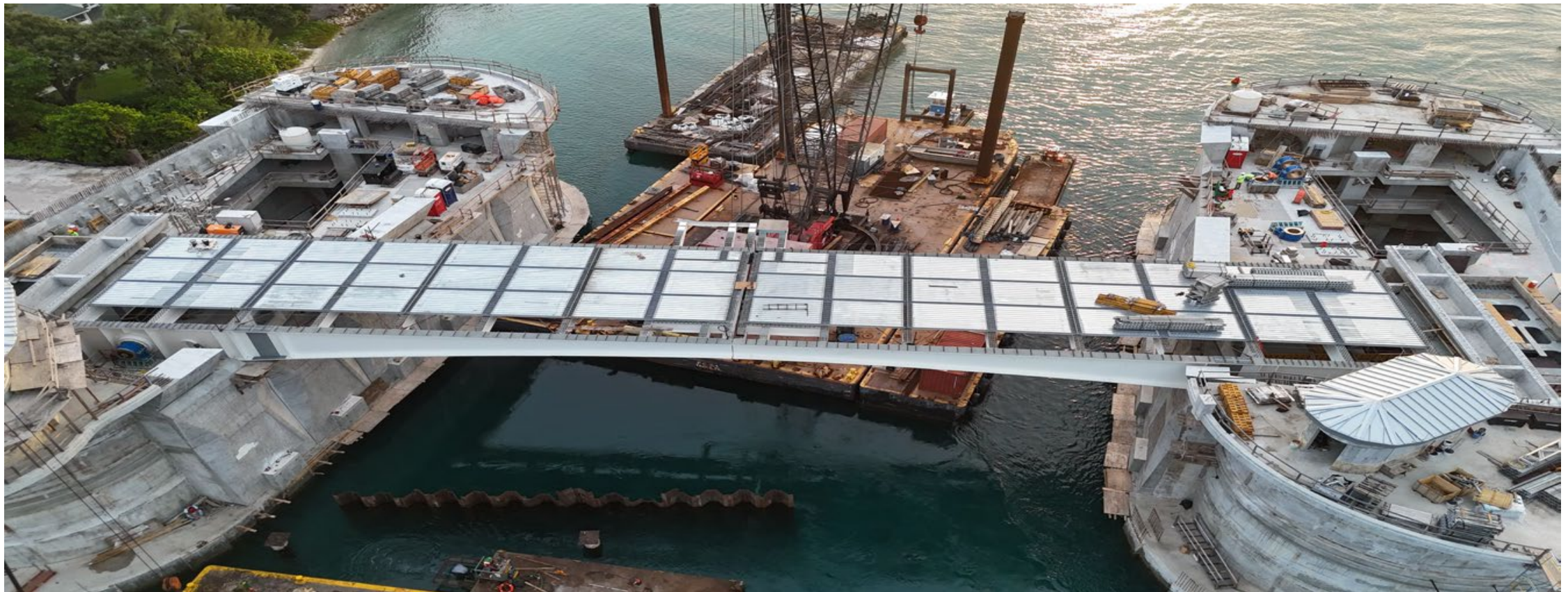
PAVE THE BRIDGE APPROACHES, north side



STATUS OF REMAINING MILESTONES TO OPEN WEST SIDE OF BRIDGE TO TRAFFIC



POUR CONCRETE DECK ON BASCULE BRIDGE, northwest leaf then southwest leaf
SHIFT BOAT TRAFFIC INTO THE MAIN CHANNEL, under the bascule bridge



STATUS OF REMAINING MILESTONES TO OPEN WEST SIDE OF BRIDGE TO TRAFFIC

SET BEAMS FOR SPAN 3, south side of bascule bridge

POUR CONCRETE DECK FOR SPAN 3, south side of bascule bridge

