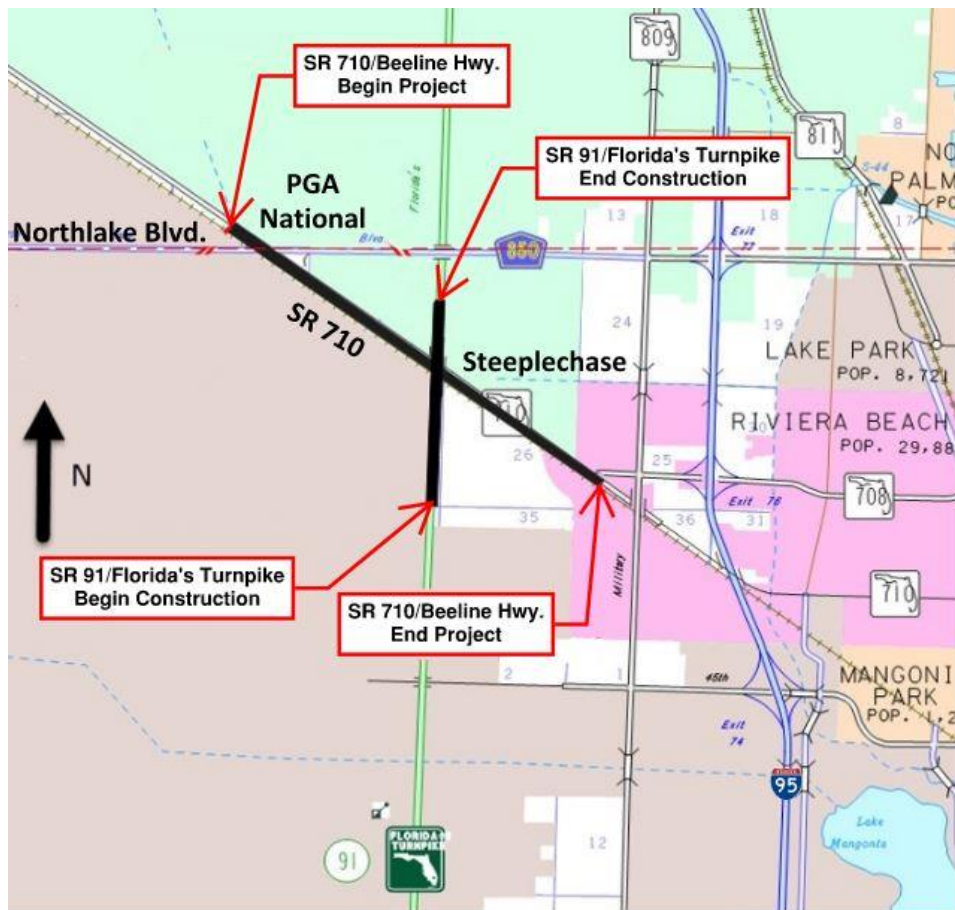


State Road 710/Beeline Highway Improvements

Financial Project ID No. 419251-1-52-01

FINAL DESIGN UPDATE – April 27, 2022, 5:30 p.m.

Welcome



PUBLIC INFORMATION OFFICER/MODERATOR
Lauren Hatchell



www.d4fdot.com/pbfdot/state_road_710_beeline_hwy_project.asp

Project Team



FDOT PROJECT MANAGER
James Hughes, P.E.



FDOT COMMUNICATIONS MANGER
Billy Canedo



ENGINEER OF RECORD
HDR Engineering, Inc.
Rohan Hameed, PhD, P.E.



CONSULTANT PROJECT MANAGER
HDR Engineering, Inc.
Ronald Sanchez, P.E.



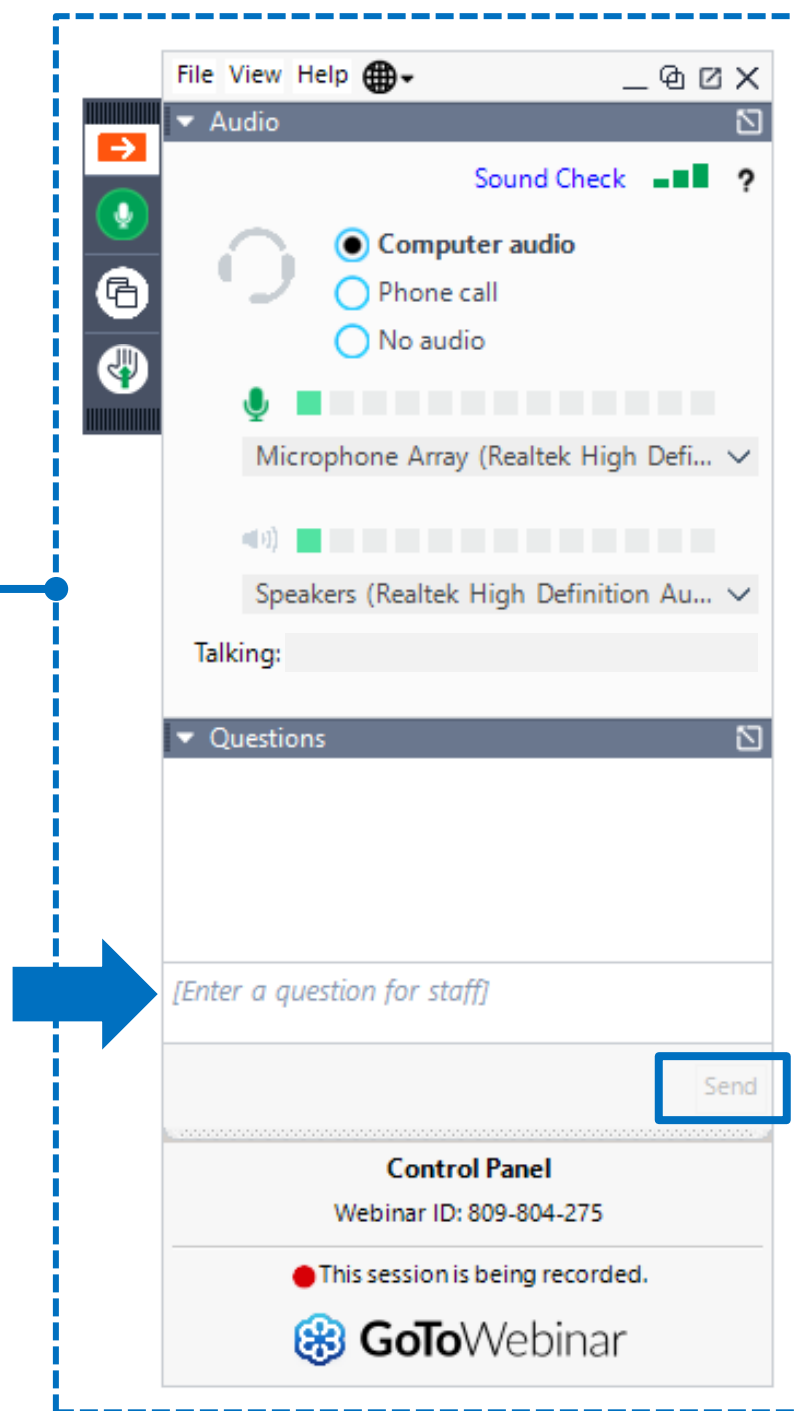
TECHNICAL EXPERT
HDR Engineering, Inc.
Smith Siromaskul, P.E.

Agenda

1. General Information
2. Non-Discrimination Statement and Title VI Contacts
3. Project Overview
4. Project History
5. Explanation of Continuous Flow Intersection
6. Details of Continuous Flow Intersection
7. Typical Sections
8. All Movements Between SR 710/Beeline Highway and North Lake Boulevard
9. Project Schedule
10. Public Comments, Questions and Answers
11. Closing and Contact Information

1. GENERAL INFORMATION

GoToWebinar Control Panel

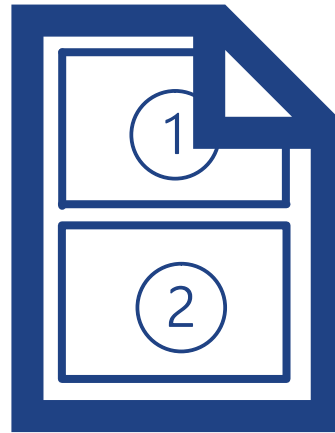


For Dial-In by Phone Attendees

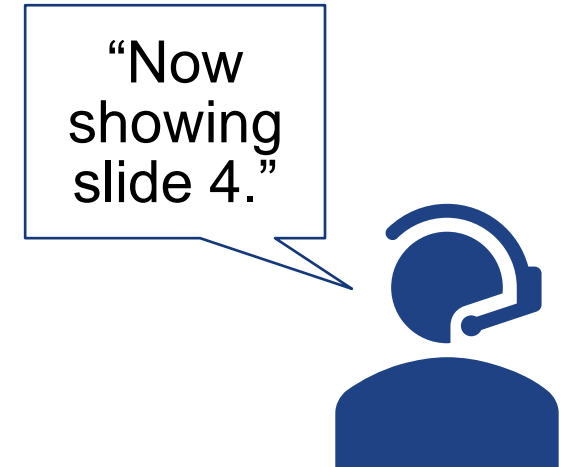
Dial-in
attendees are
'listen only'



If you requested or downloaded the presentation



Paper copy of
presentation



Presenter will indicate
slide number

www.d4fdot.com/pbfdot/state_road_710_beeline_hwy_project.asp

To report a technical issue...



Type in
Question box on
GoToWebinar
Control Panel



Send an email to
manny@graph-
code.com



Call
(786) 352-4351

Written Comments and Questions

Multiple ways to submit:

1. Online using GoToWebinar

Type your comment/question in the
Question box

2. Online at project website
3. By email to Project Manager
4. By U.S. mail to Project Manager

Project Website

www.d4fdot.com/pbfdot/state_road_710_beeline_hwy_project.asp

Project Manager Contact Information

James Hughes, P.E.
Florida Department of
Transportation, District Four
3400 West Commercial
Boulevard
Fort Lauderdale, FL 33309
James.Hughes@dot.state.fl.us
(954) 777-4419

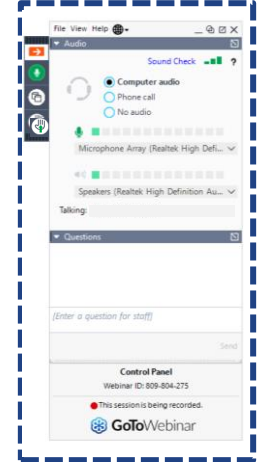

Verbal Comments and Questions

Multiple ways to submit:

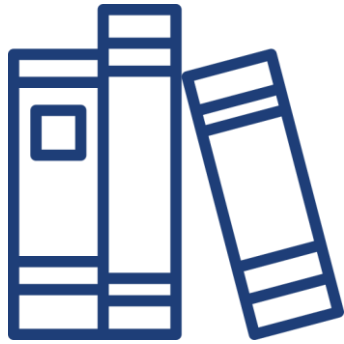
1. Online using GoToWebinar

Please **unmute yourself** when called upon

2. By phone, after the meeting

<p>①</p> 	<p>②</p>  <p>James Hughes, P.E. (954) 777-4419</p>
--	---

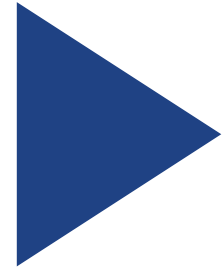
About Your Comments and Questions



All comments and questions are part of the **Public Record.**

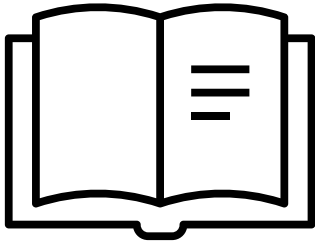


Please submit your comments and questions **by May 4, 2022.**

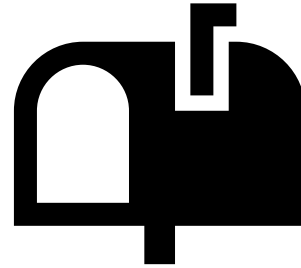


All registrants will receive a link to the **meeting recording.**

Public Notice



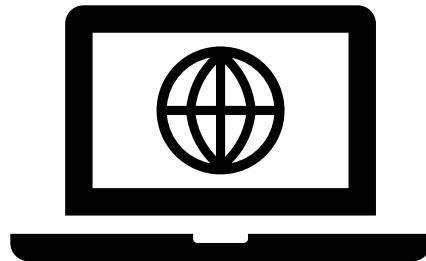
**Florida Administrative
Register**



Property owner/tenant letters



Email to project contacts list



Department/project webpage



Social media

Project Documents



Draft project documents are available for public review at the following location and online.

Physical Location

Florida Department of
Transportation, District Four
3400 West Commercial Blvd.
Fort Lauderdale, FL 33309



Project Website

[www.d4fdot.com/pbfdot/
state_road_710_beeline
_hwy_project.asp](http://www.d4fdot.com/pbfdot/state_road_710_beeline_hwy_project.asp)



2. NON-DISCRIMINATION STATEMENT AND TITLE VI CONTACTS

Title VI of the Civil Rights Act of 1964

Title VI Compliance

Public participation is solicited without regard to race, color, national origin, age, sex, religion, disability, or family status. Persons wishing to express concerns relative to FDOT compliance with Title VI may do so by contacting:

Sharon SinghHagyan
District Four Title VI Coordinator
3400 West Commercial Boulevard
Fort Lauderdale, FL 33309
954.777.4190
Sharon.SinghHagyan@dot.state.fl.us

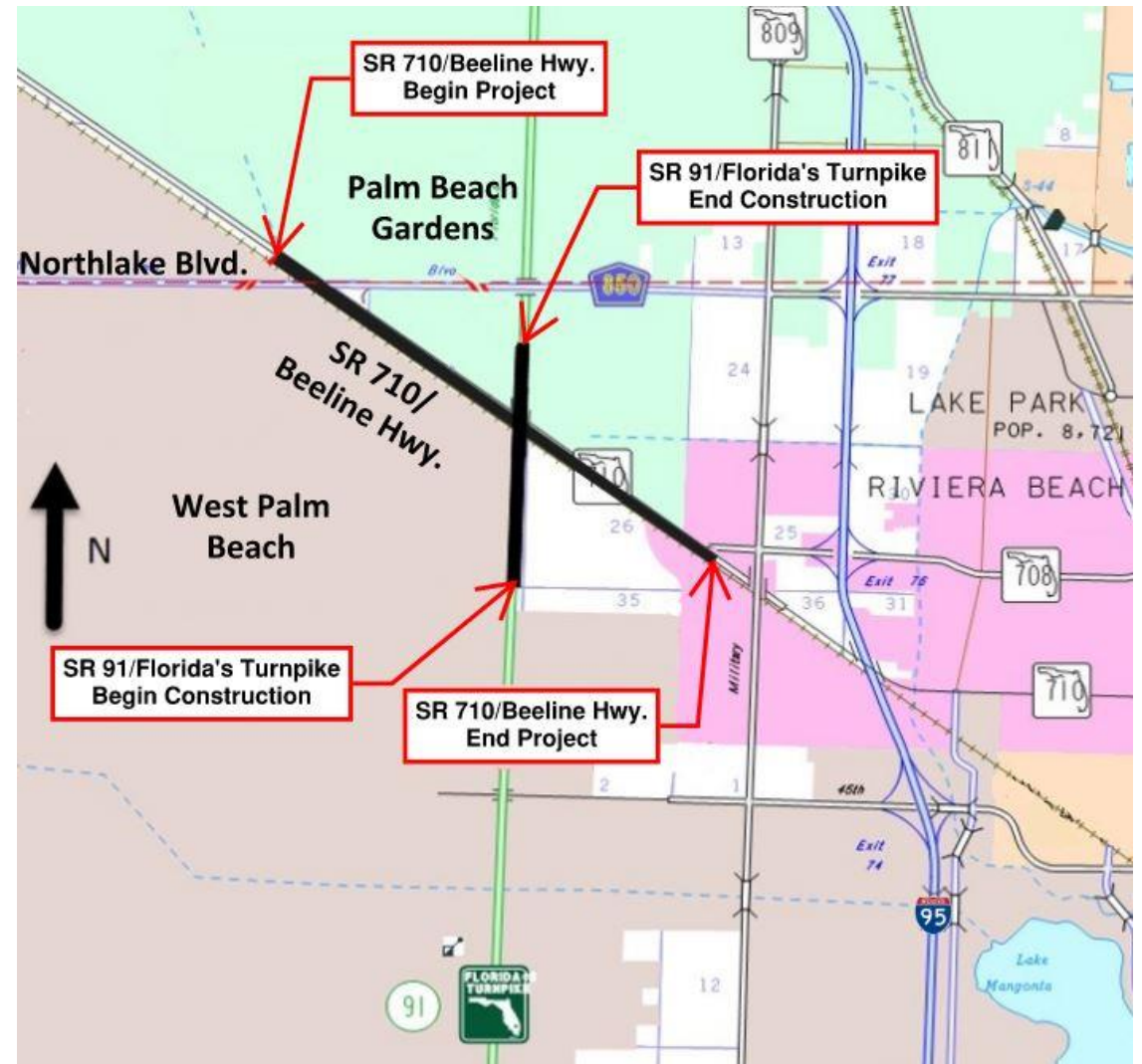
Jacqueline Paramore
State Title VI Coordinator
605 Suwannee Street
Tallahassee, Florida 32399
50.414.4100
Jacqueline.Paramore@dot.state.fl.us

All inquiries or concerns will be handled according to FDOT procedure and in a prompt and courteous manner.

3. PROJECT OVERVIEW

Project Location and Limits

- **SR 710/Beeline Highway from Northlake Boulevard to SR 708/Blue Heron Boulevard and the Florida Turnpike Bridge**
- **Cities: Palm Beach Gardens, Riviera Beach, and West Palm Beach**
- **Palm Beach County**

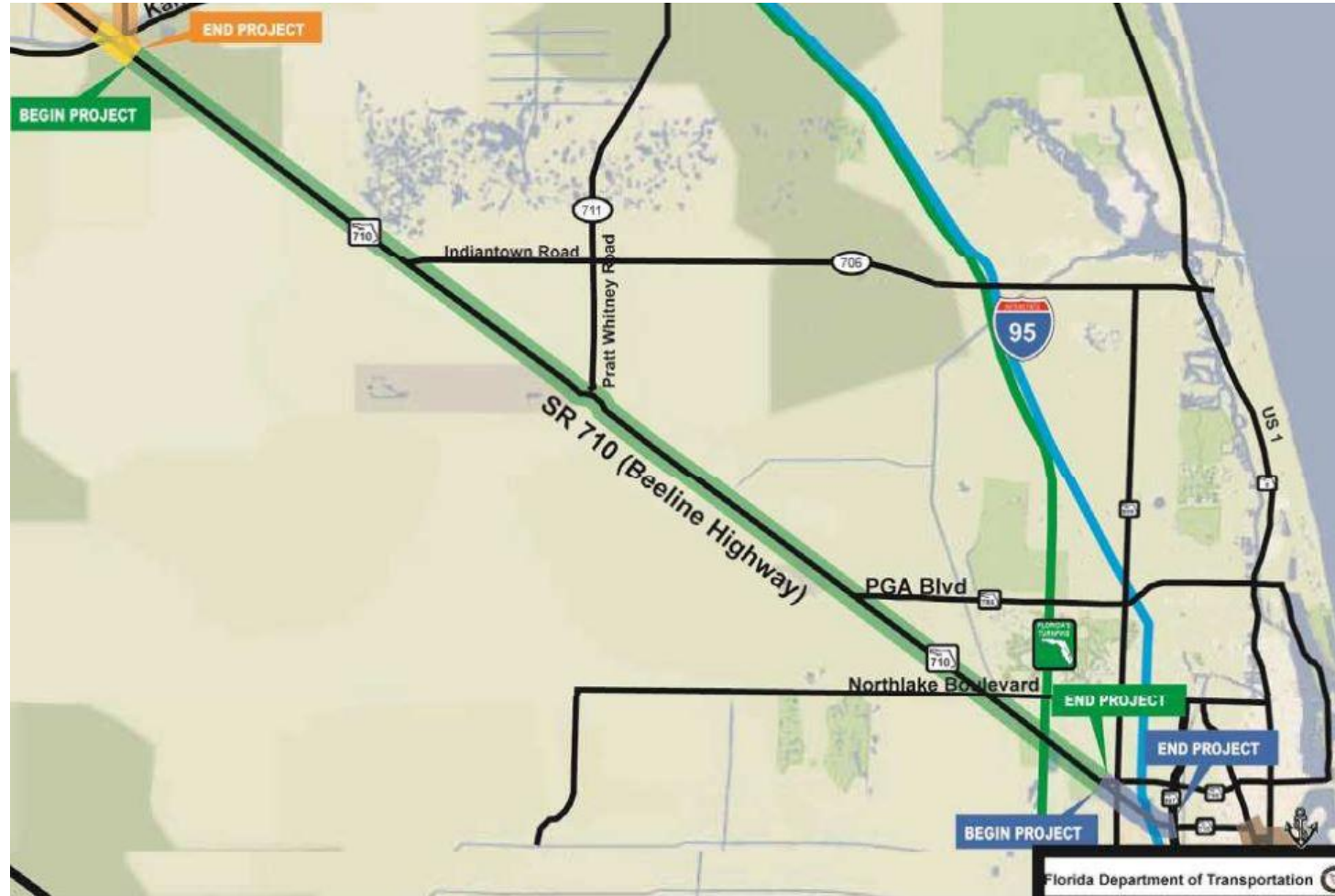


Adjacent Residential Communities



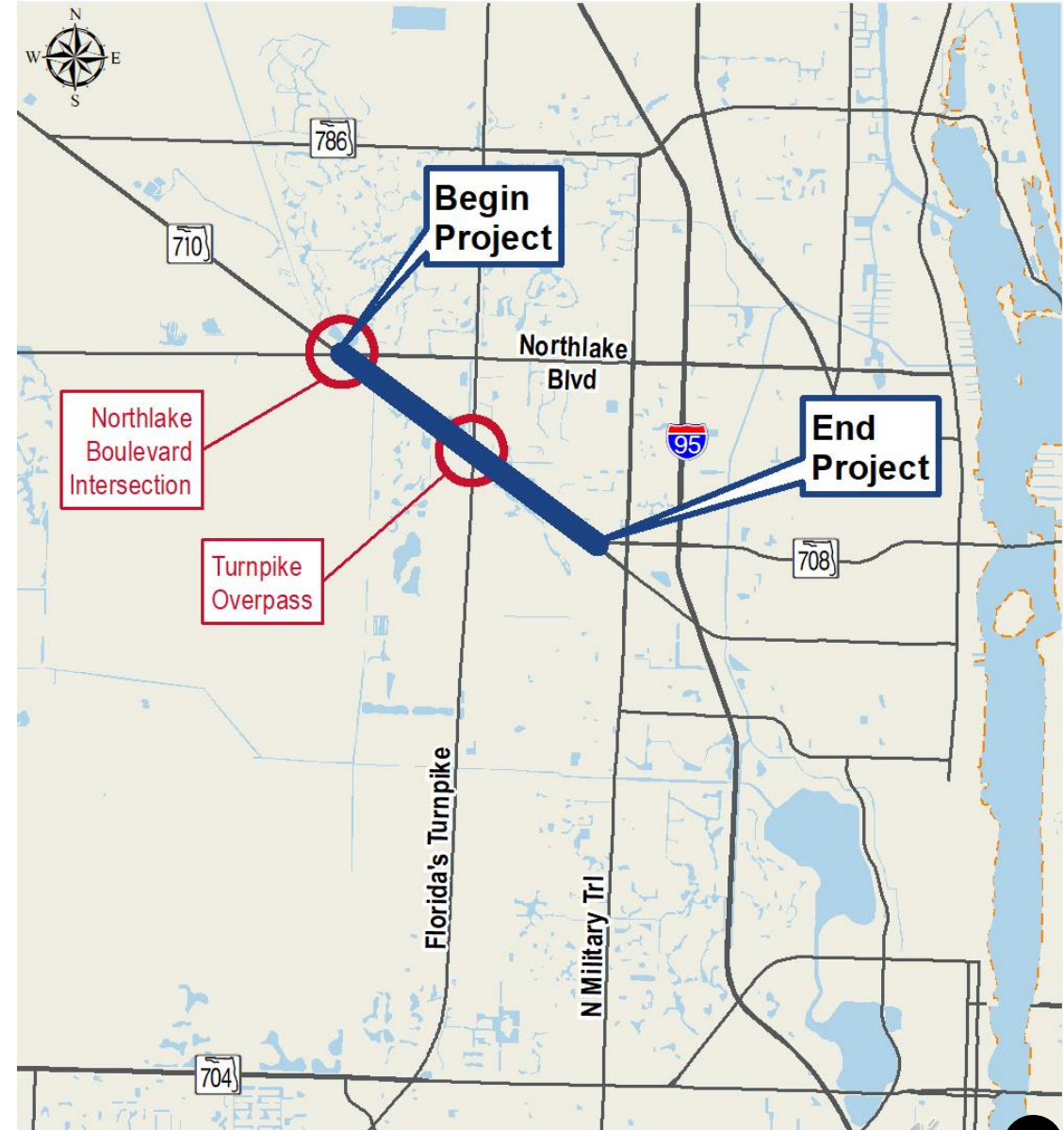
4. PROJECT HISTORY

Project Development and Environment (PD&E) Study Public Hearing – August 7, 2013



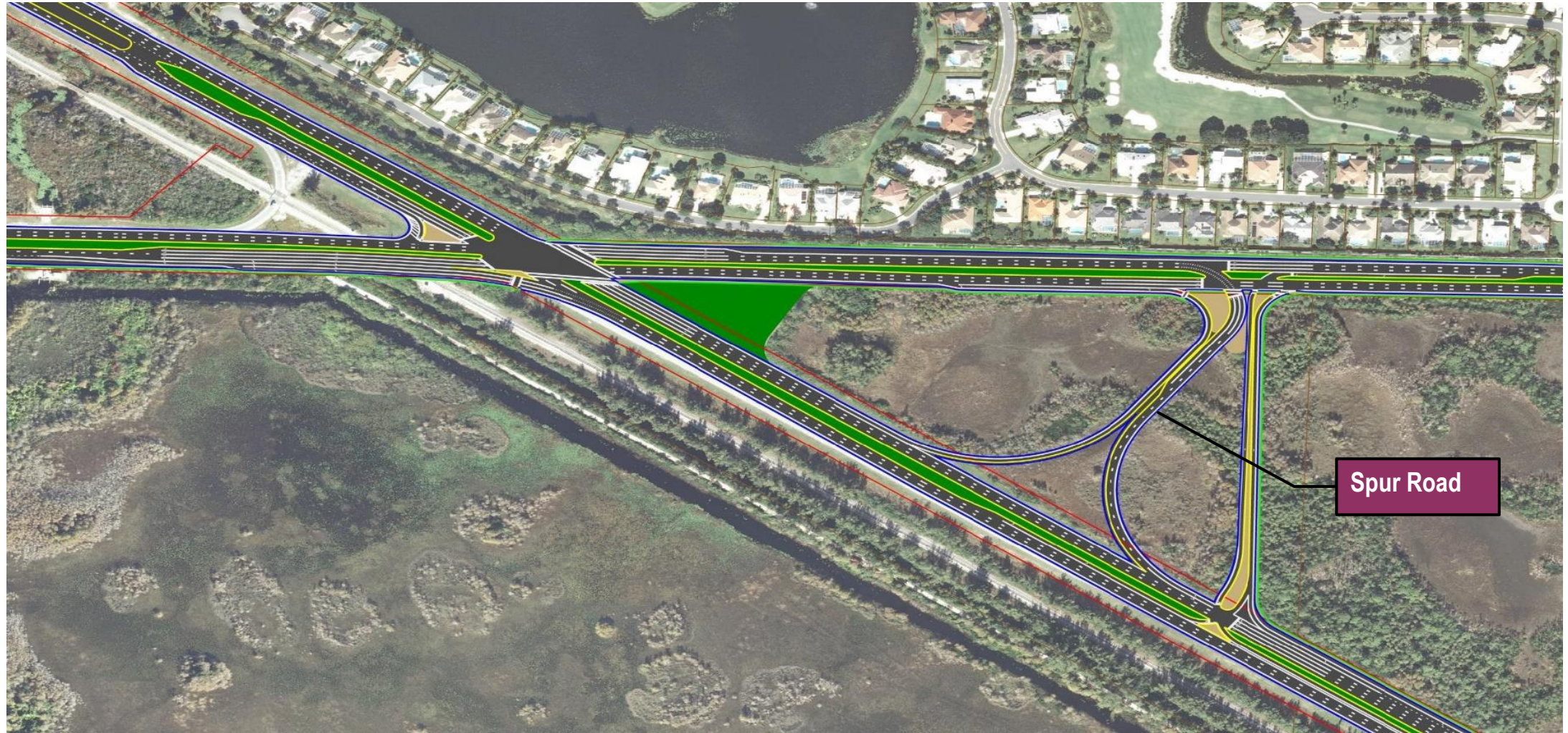
Original PD&E improvements

- The proposed improvements from the PD&E study for the project area:
 - Adding two lanes to the existing four-lane divided section at SR 710
 - New grade separated intersection at SR 710 and Northlake Boulevard
 - Replacement of Florida Turnpike bridge to accommodate SR 710 widening

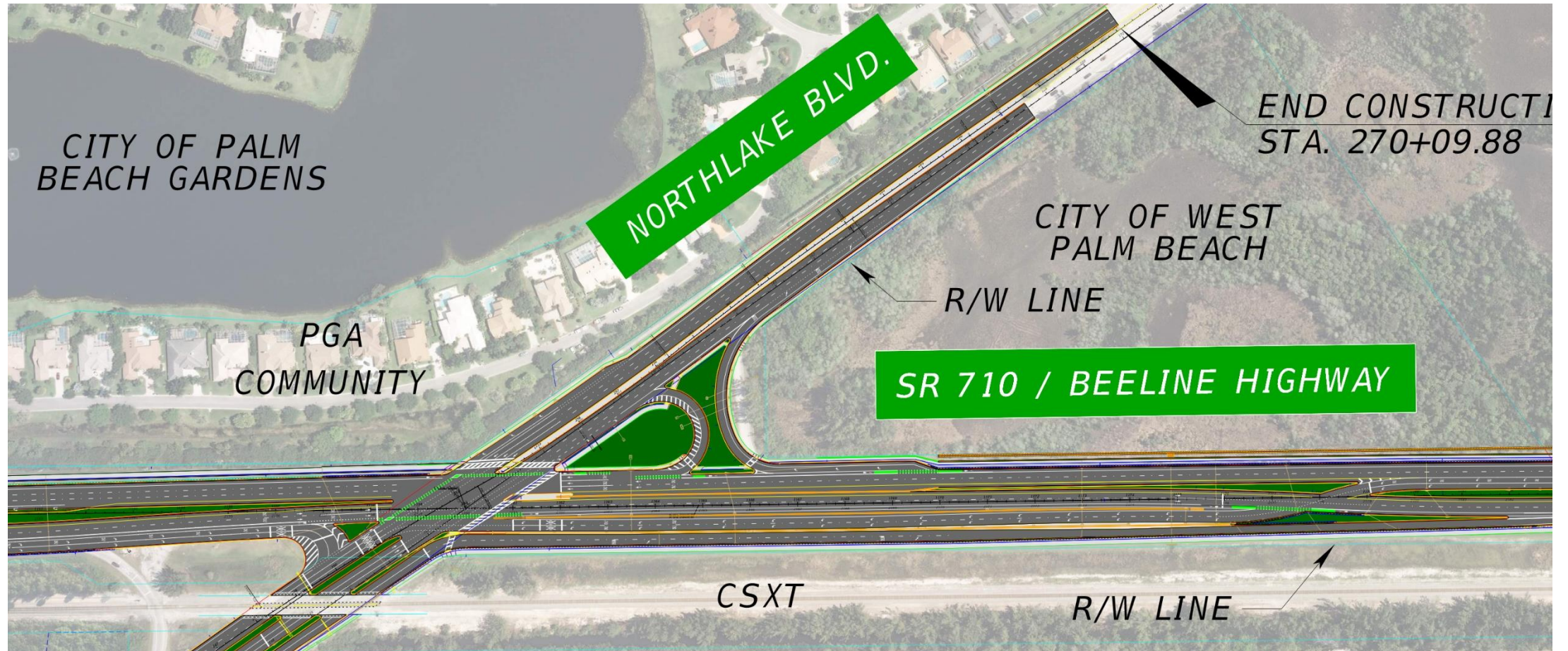




Quadrant Road Configuration Presented in Design Workshop (June 2017)



Partial Continuous Flow Intersection (CFI) Configuration Presented in January 2019 Design Public Hearing



- **Several meetings with the North County Neighborhood Coalition (NCNC) and HOAs from 2019 through early 2022**

5. EXPLANATION OF CONTINUOUS FLOW INTERSECTION

Partial Continuous Flow Intersection (CFI) Configuration Presented in January 2019 Design Public Hearing



Traffic Signal Timing Basics

- Time is fixed so the options for improving capacity can be simplified into two approaches:

1

Increase vehicle flow in set time

- Add lanes

2

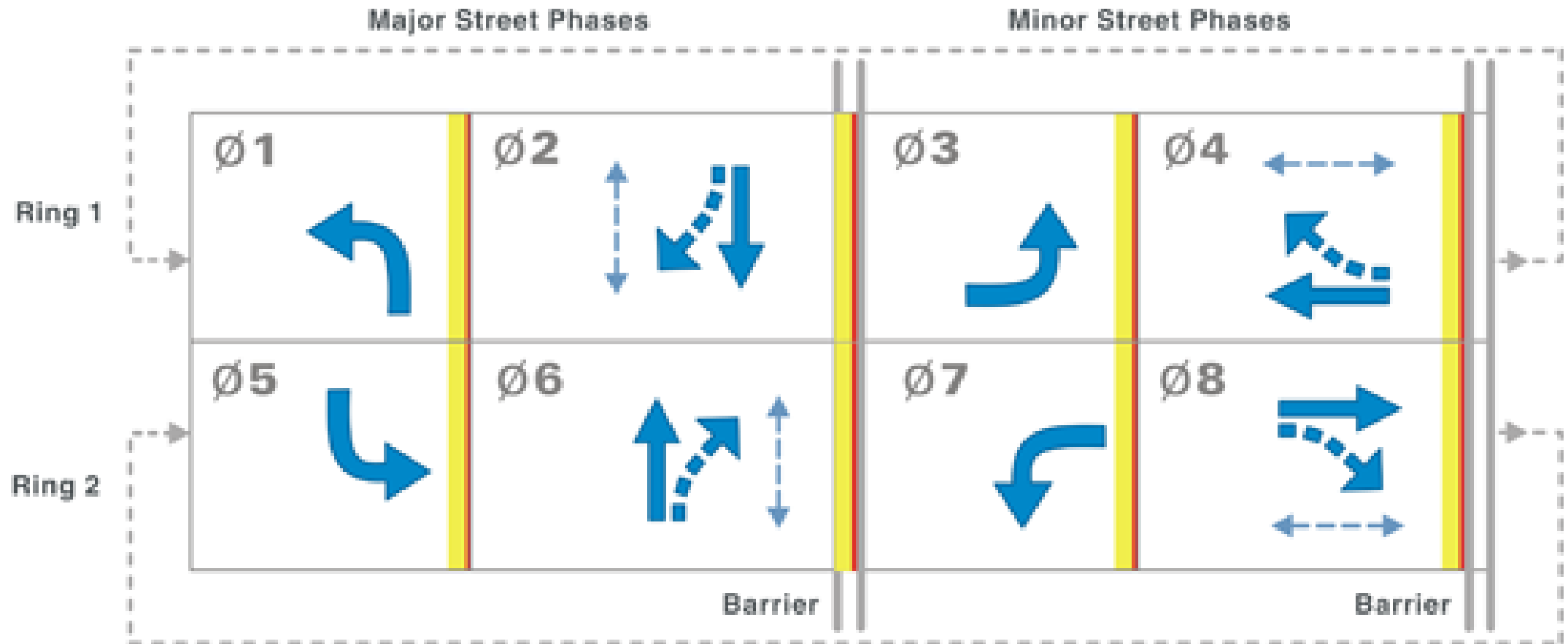
Share time between fewer things

- Reduce signal phases



Traffic Signal Timing Basics

Traditional 4-phase Signal



Traffic Signal Timing Basics



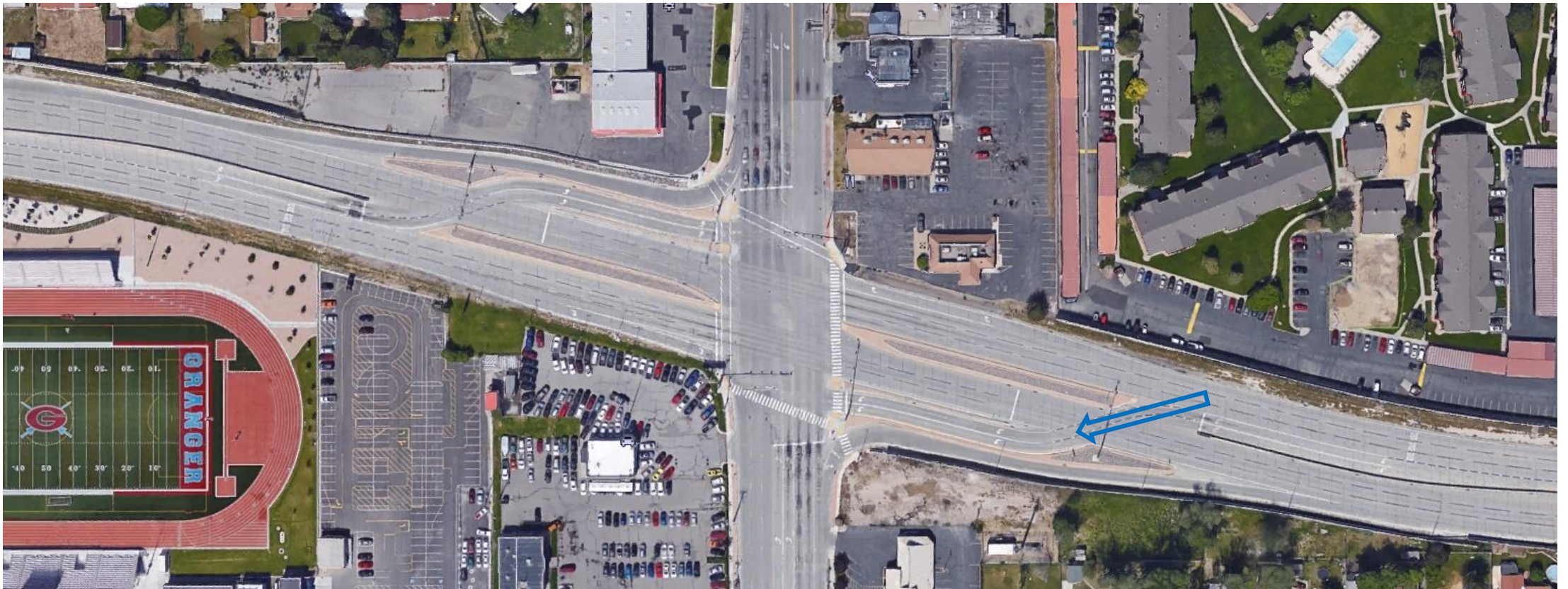
**Continuous Flow Intersection/ Displaced
Left Turn Intersection**



**Restricted Crossing U-Turn/
Median U-Turn**

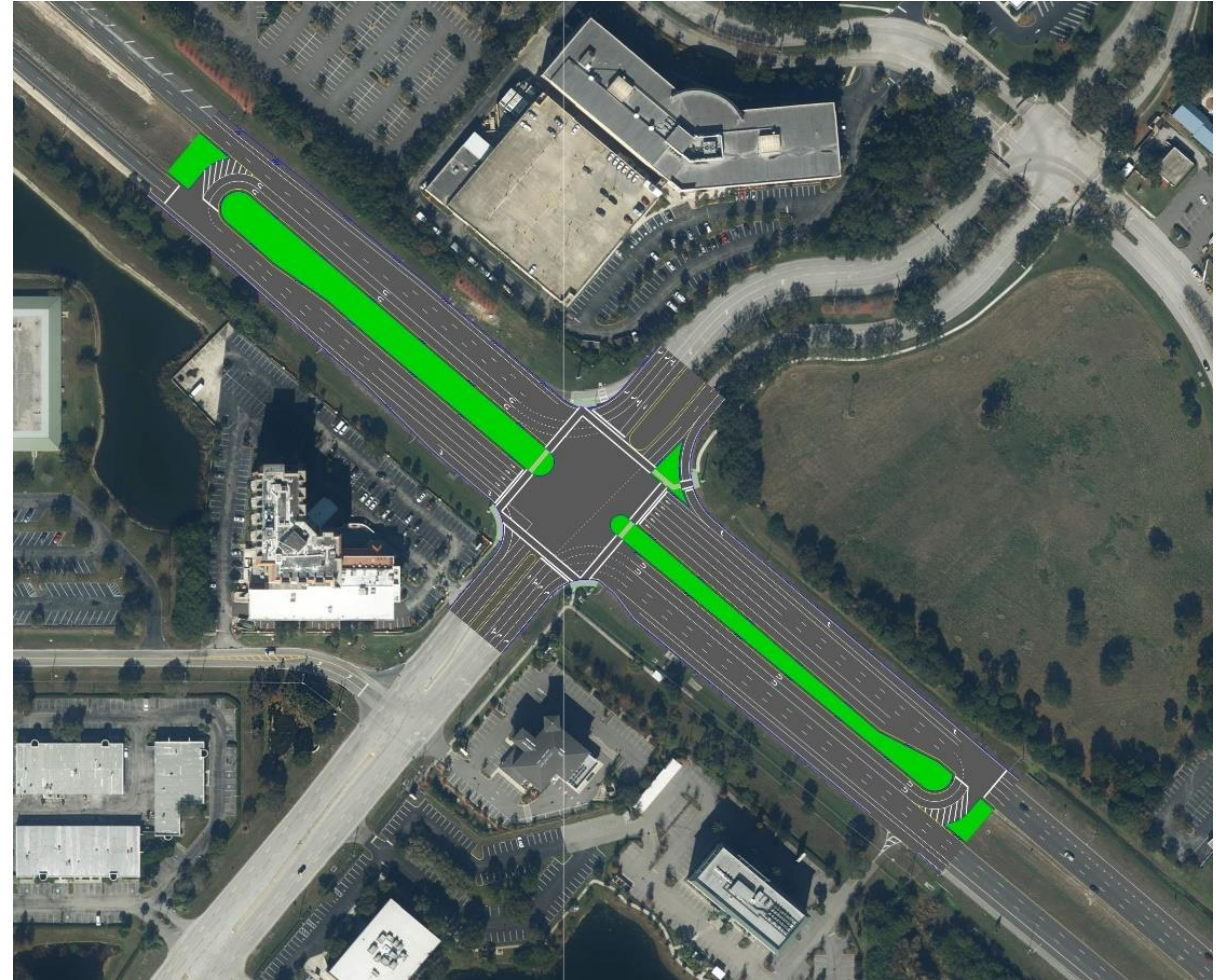
Left Turn Displacement – Continuous Flow Intersection (CFI)

- Distinguishing feature of a CFI
- Left turns concurrent with through lanes – removes signal phase



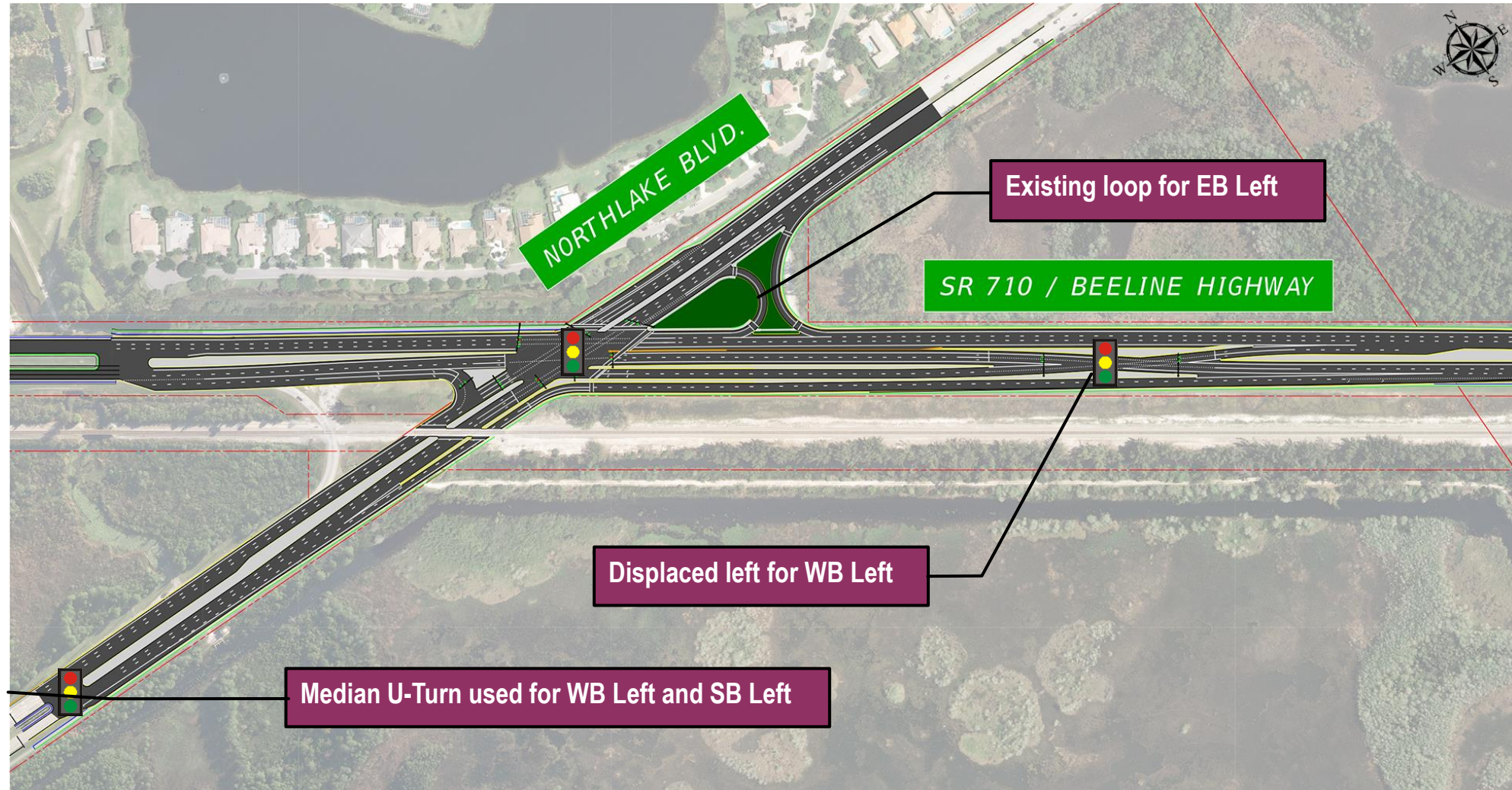
Left Turn Diversion – Michigan U-Turns (MUTs)

- Removal of left turns from main intersection
- Replace with some combination of through, right turns, and U-turns

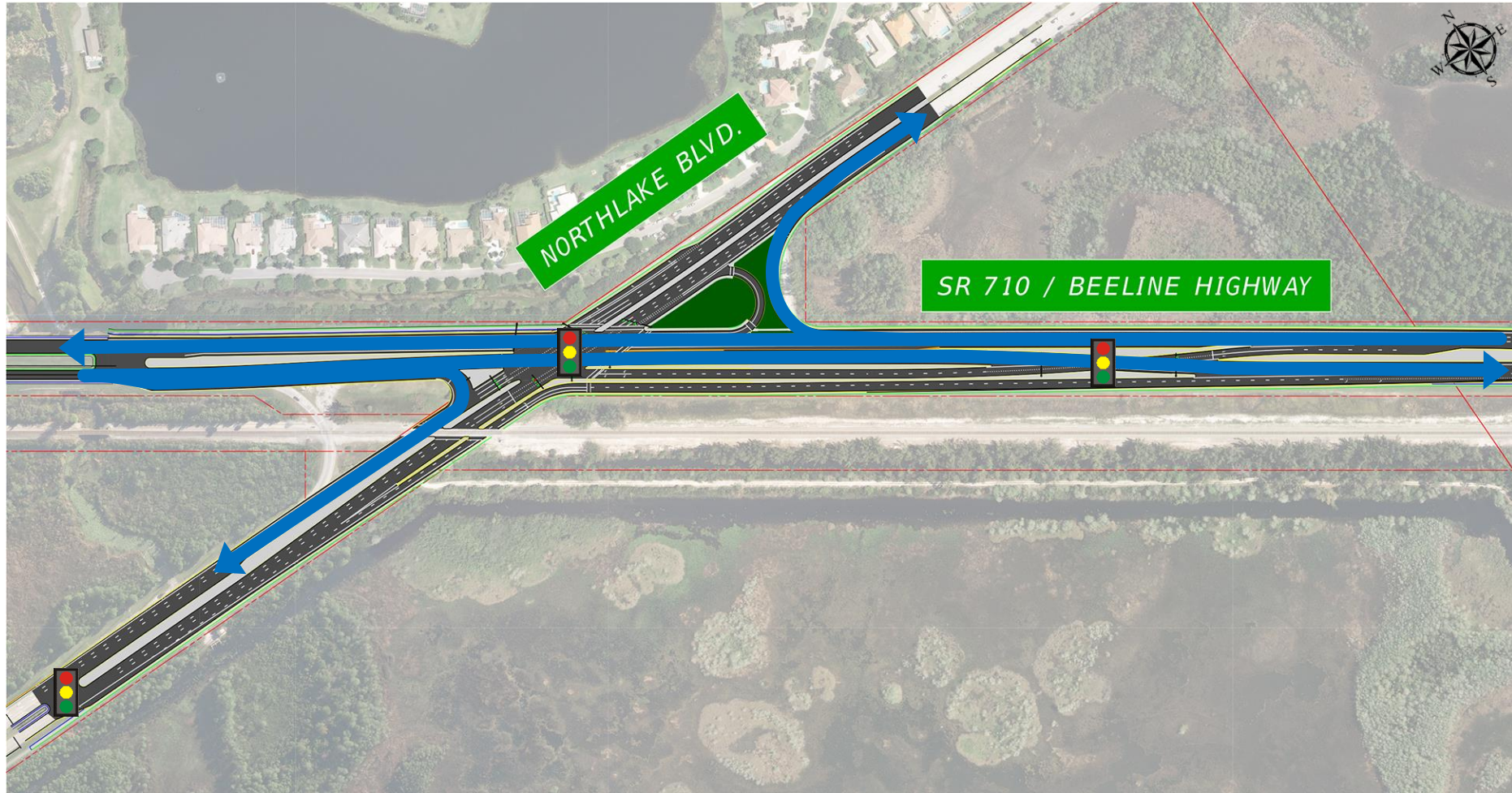


6. DETAILS OF THE CONTINUOUS FLOW INTERSECTION

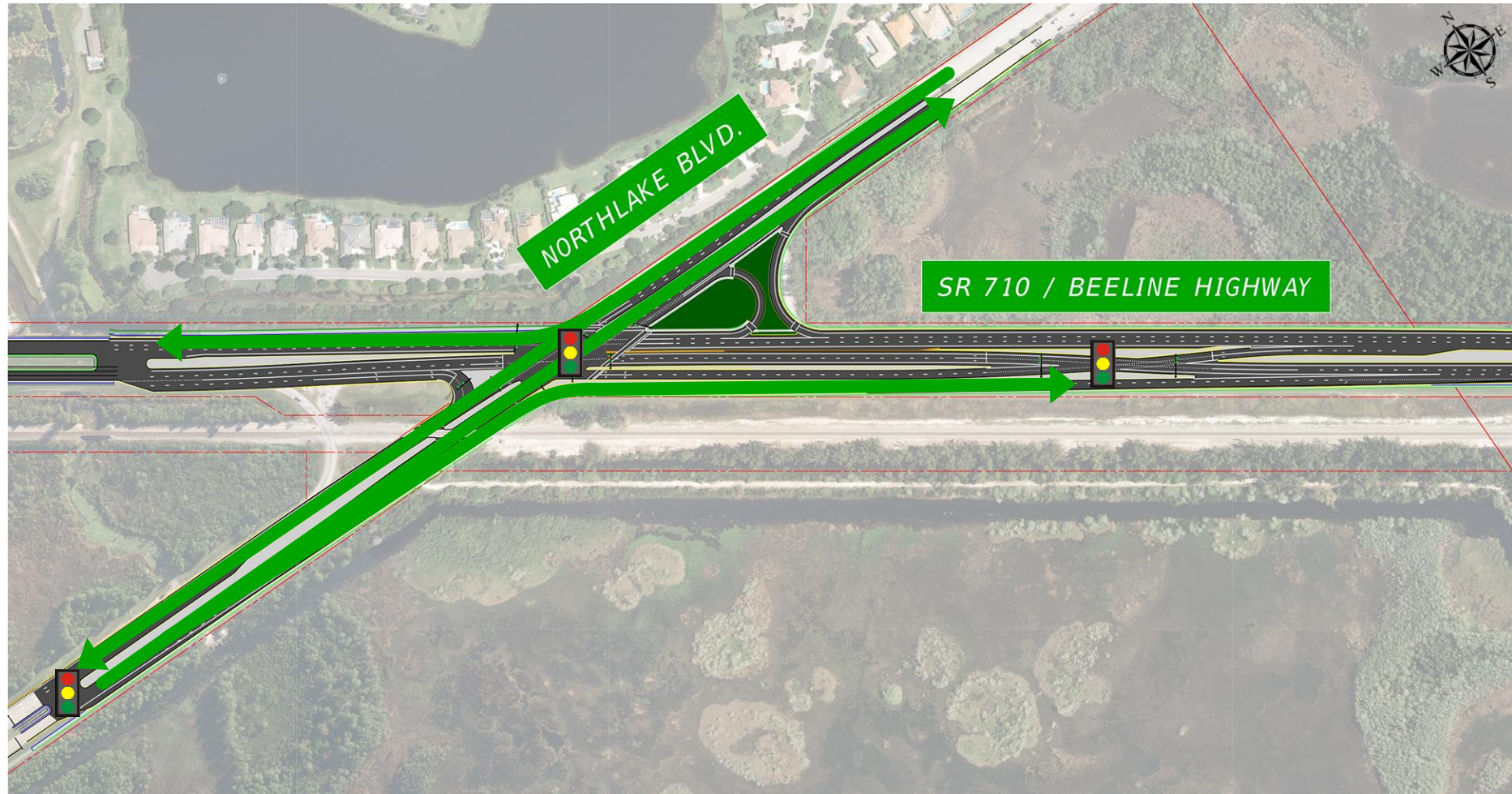
SR 710/Northlake Boulevard Overview



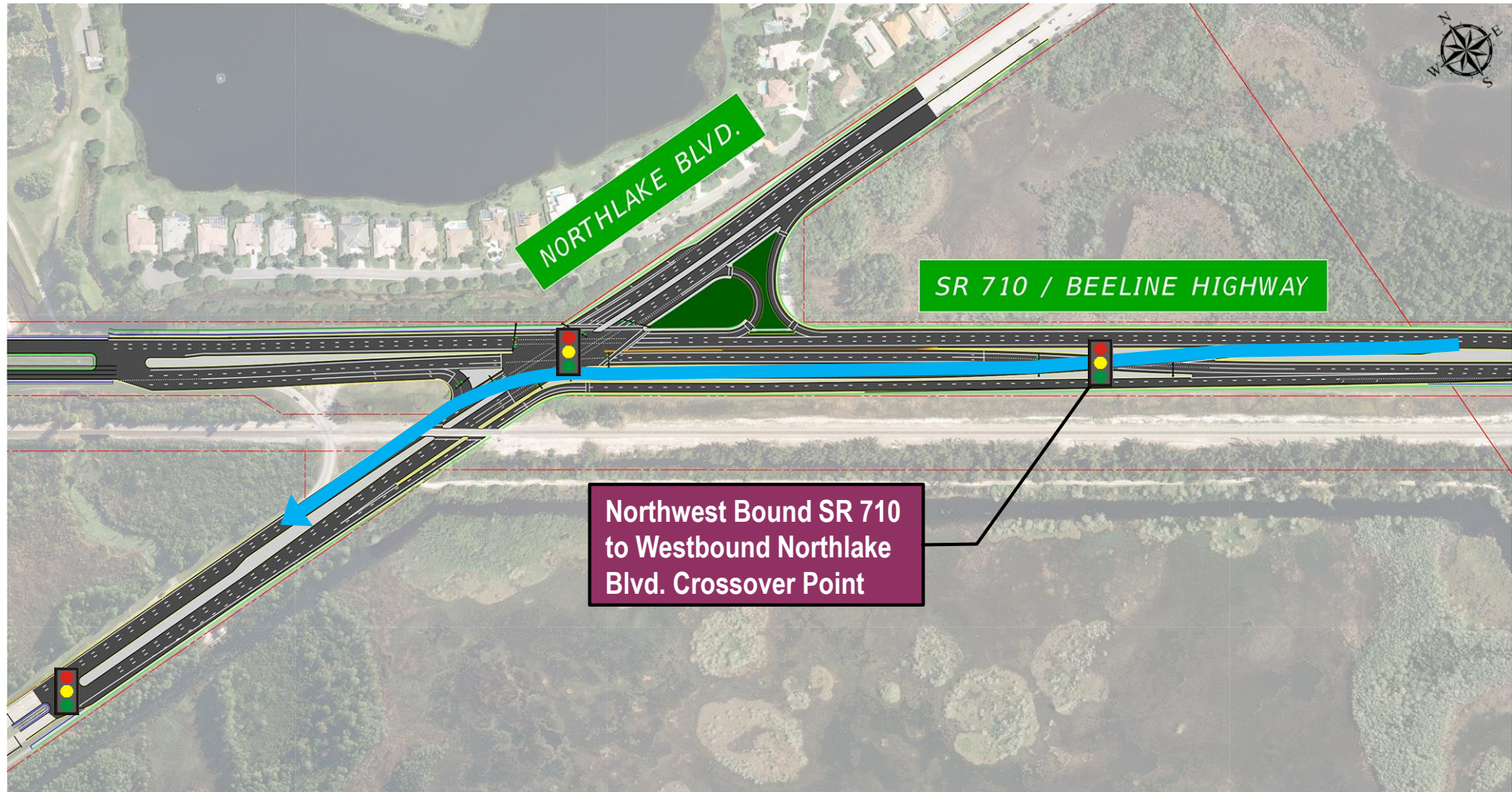
SR 710 Through Traffic and Right Turn Movements



Northlake Boulevard Through Traffic and Right Turn Movements



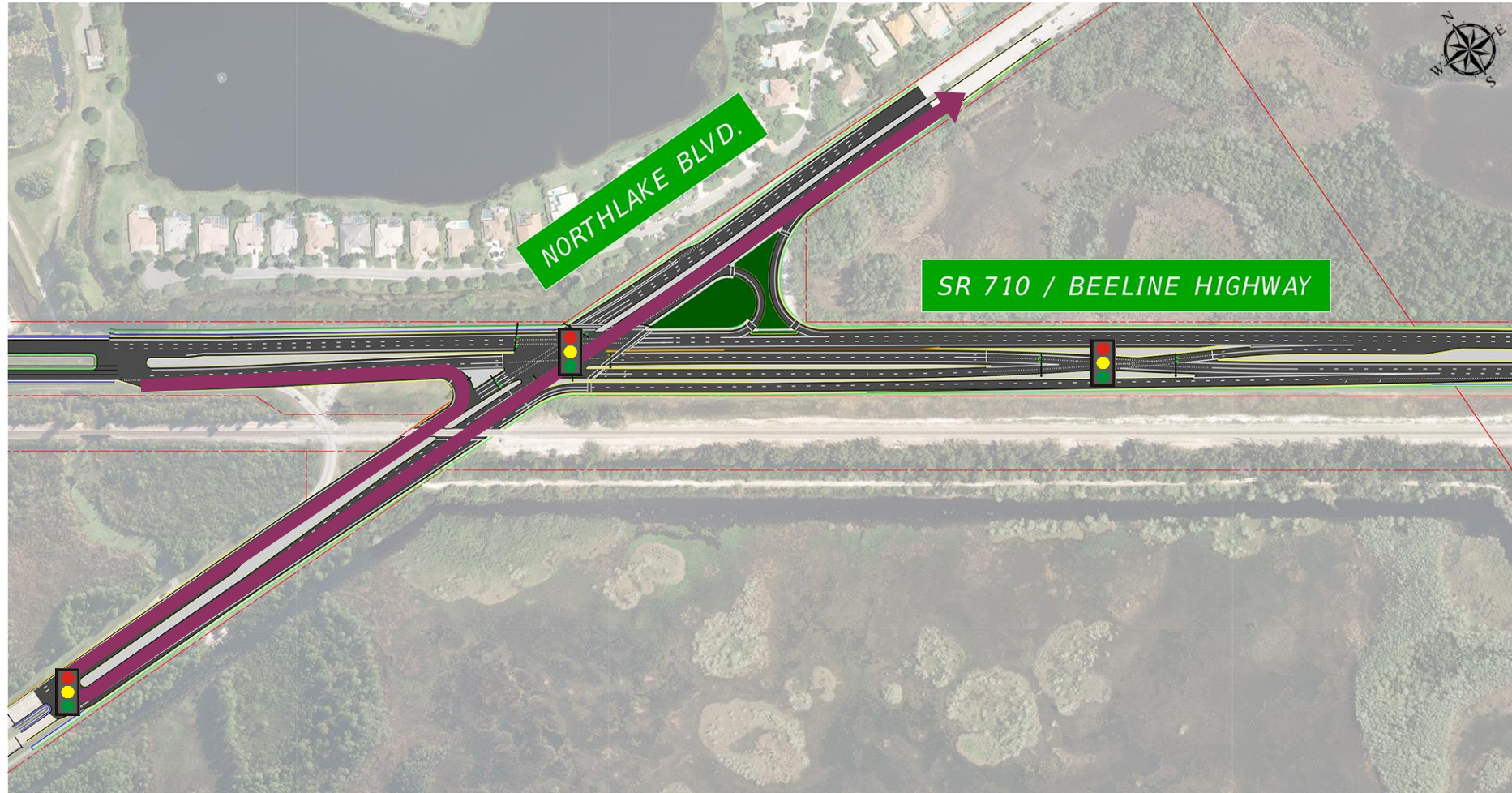
SR 710 Northwest Bound Movement to Northlake Boulevard Westbound



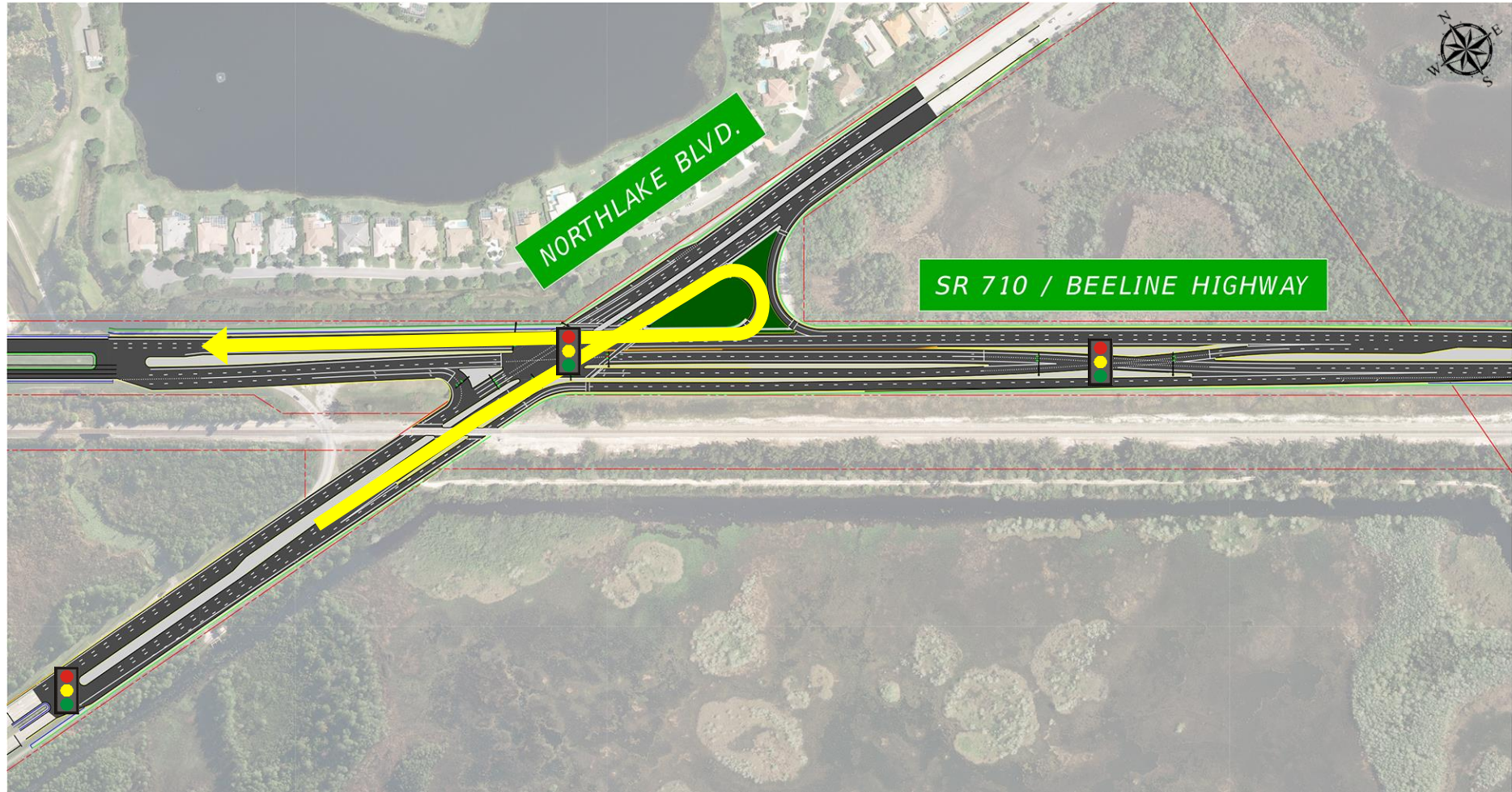
Northlake Boulevard Westbound Movement to SR 710 Southeast Bound



SR 710 Southeast Bound Movement to Northlake Boulevard Eastbound



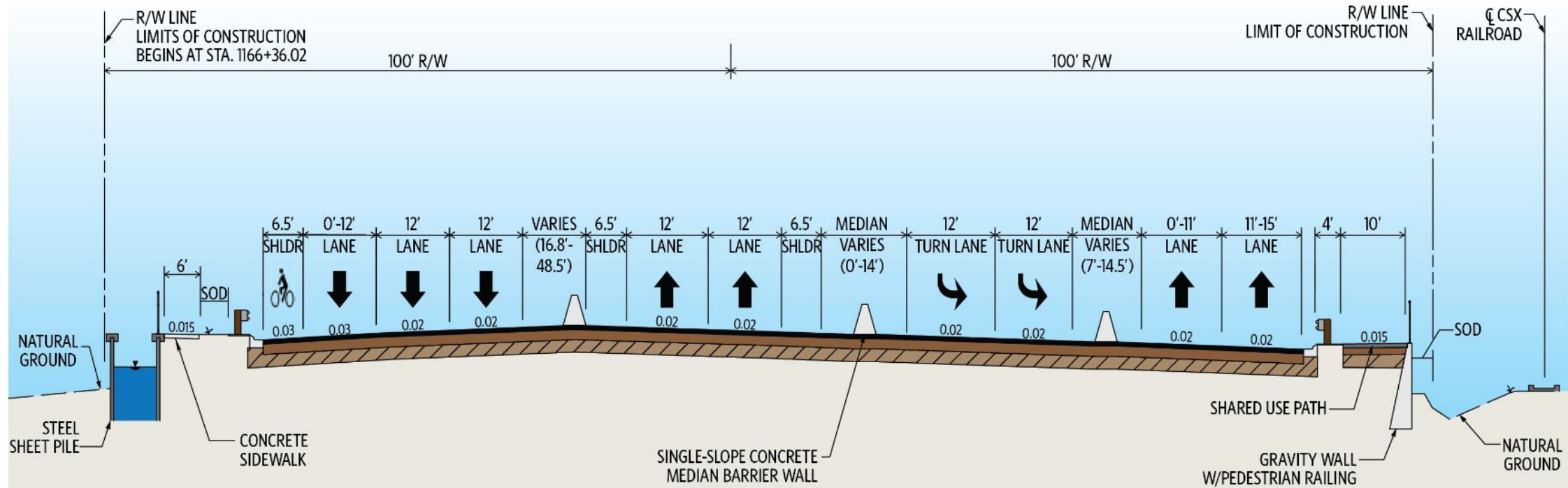
Northlake Boulevard Eastbound Movement to SR 710 Northwest Bound



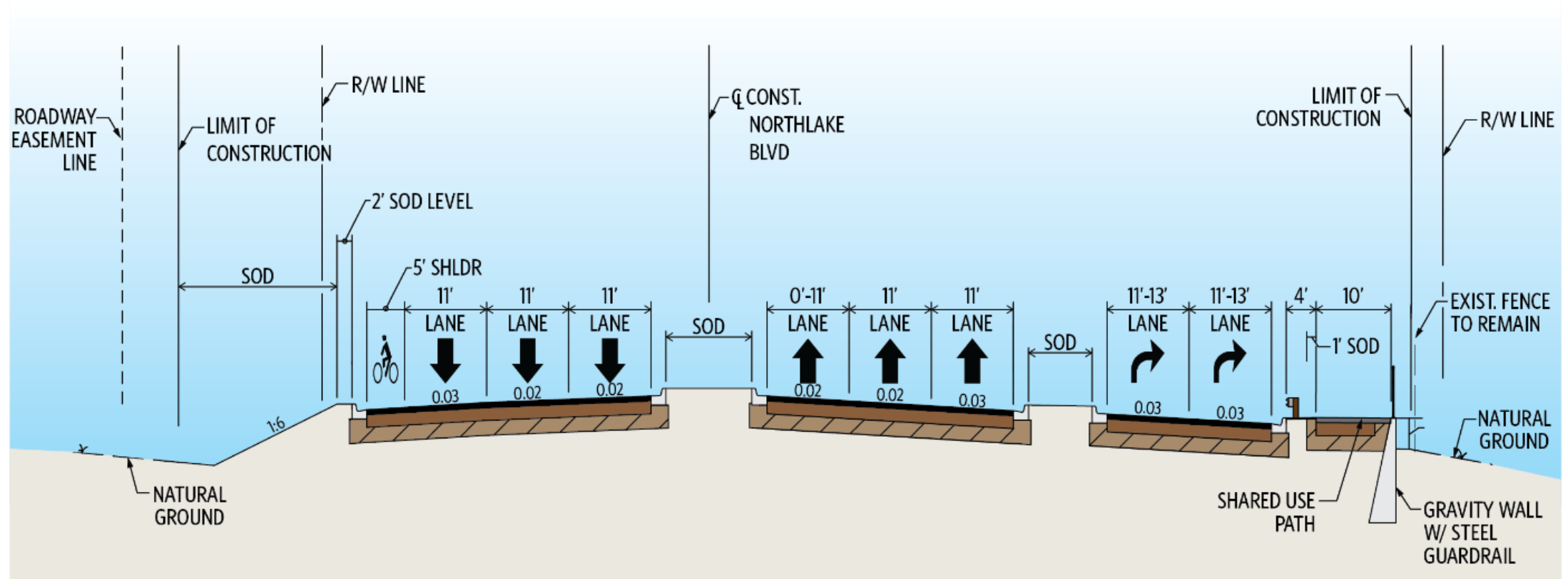
Bicycle and Pedestrian Movements through SR 710/Northlake Boulevard Intersection



SR 710 Southeast of Northlake Boulevard



Northlake Boulevard West of SR 710

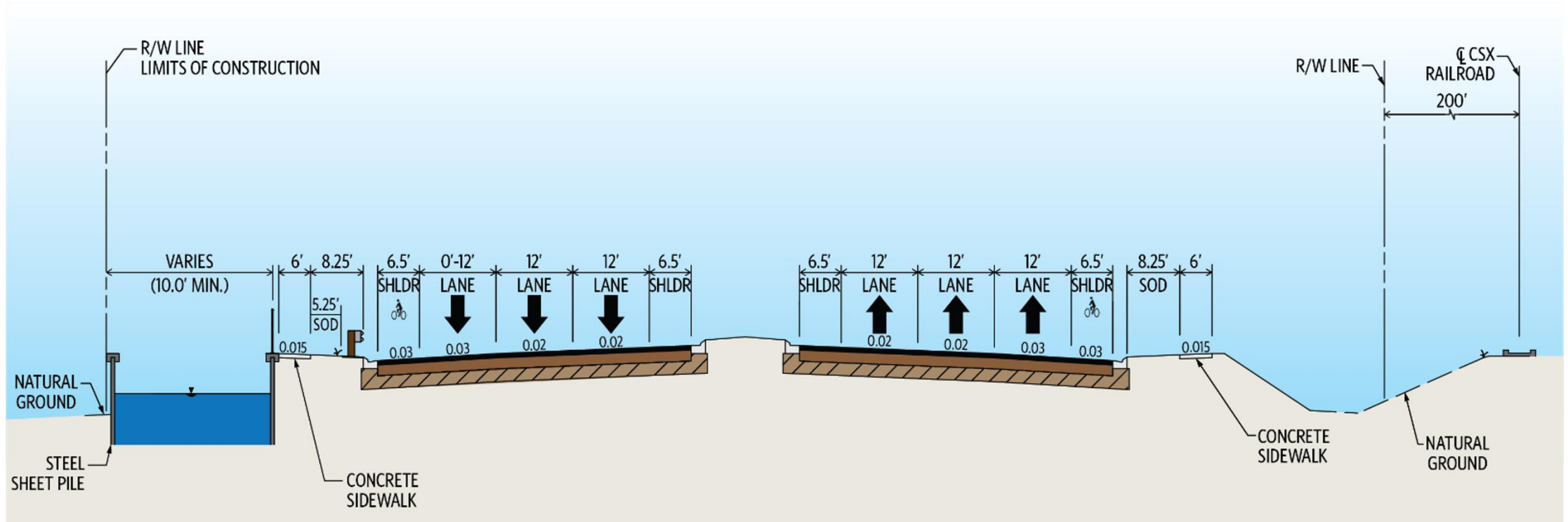


Intersection Performance

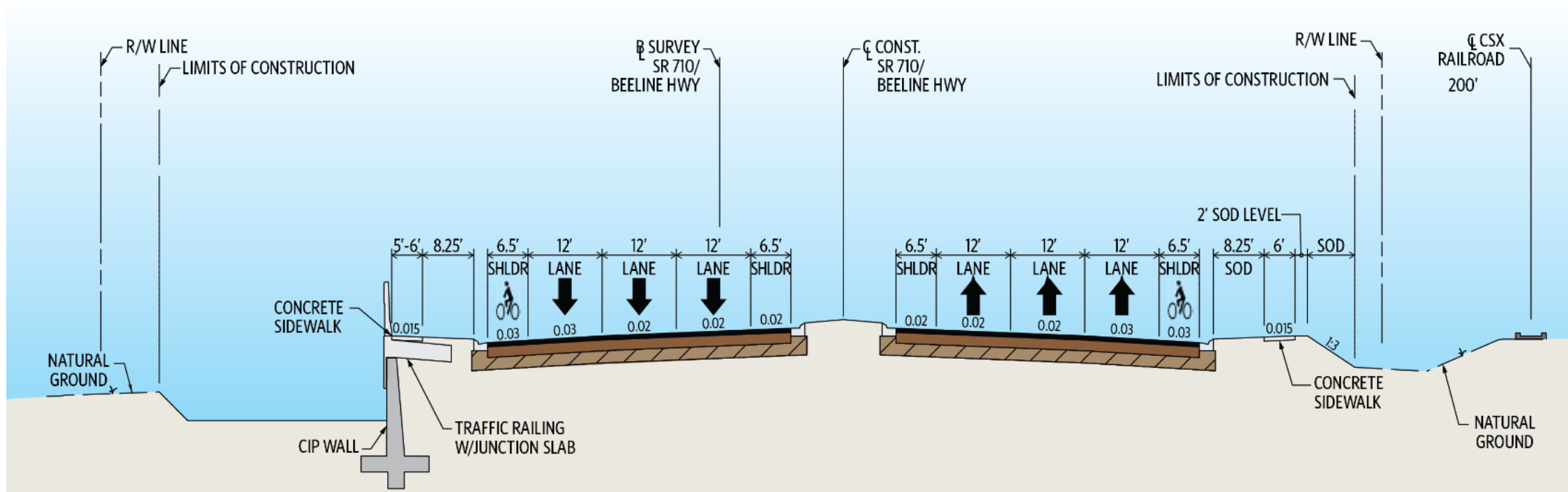
Peak Hour Design Year (DY) Level of Service (LOS)				
SR 710/Beeline Highway and Northlake Boulevard Intersection	PD&E Preferred Alternative (DY 2040)		Design Change (DY 2042)	
	AM Delay:	AM LOS:	AM Delay:	AM LOS:
	57 Seconds	E	29 Seconds	C
	PM Delay:	PM LOS:	PM Delay:	PM LOS:
	183 Seconds	F	39 Seconds	D

7. TYPICAL SECTIONS

SR 710/Beeline Highway in front of Ironhorse Community

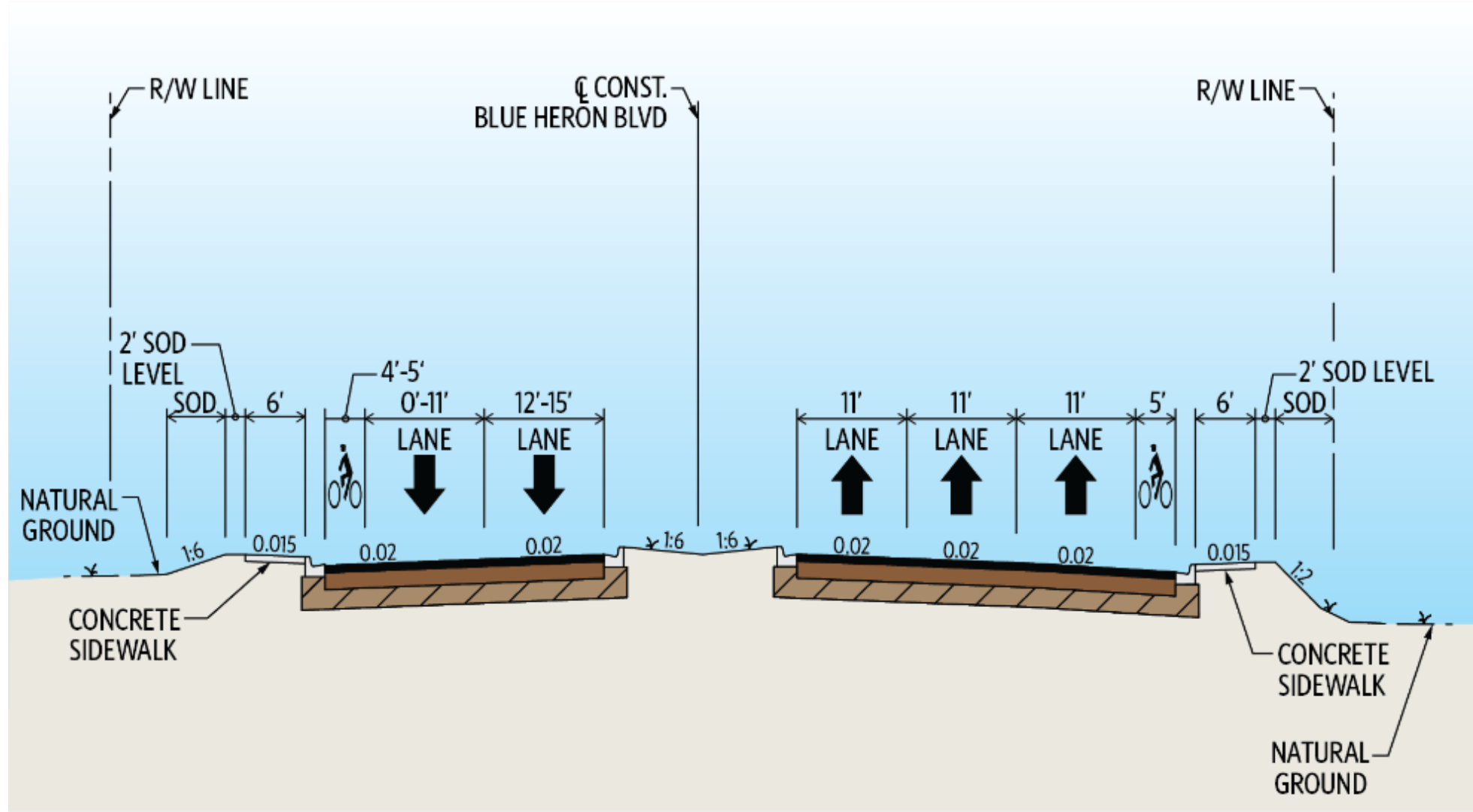


SR 710/Beeline Highway in front of Steeplechase and Dyer Park Community

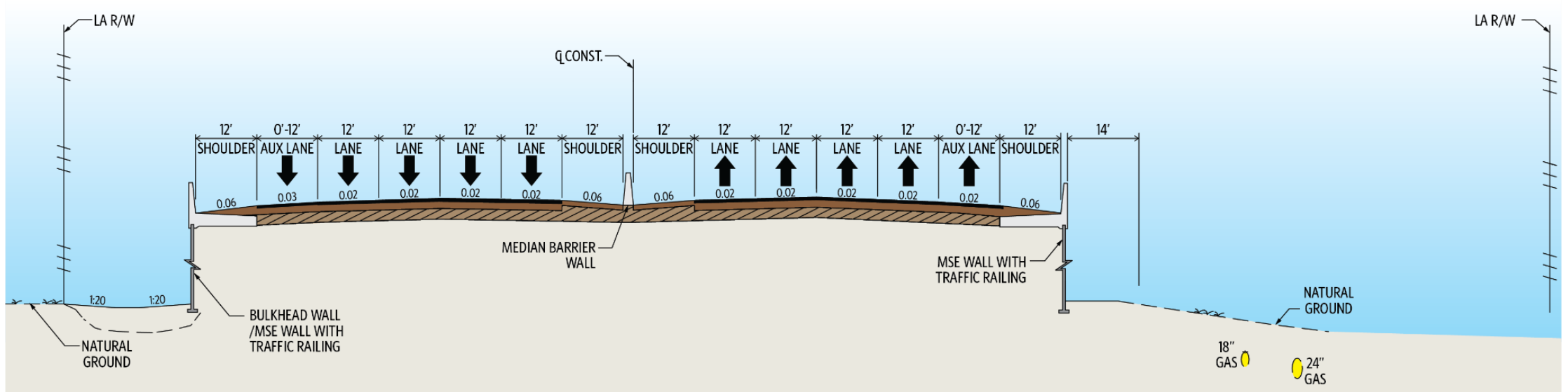




Blue Heron Boulevard



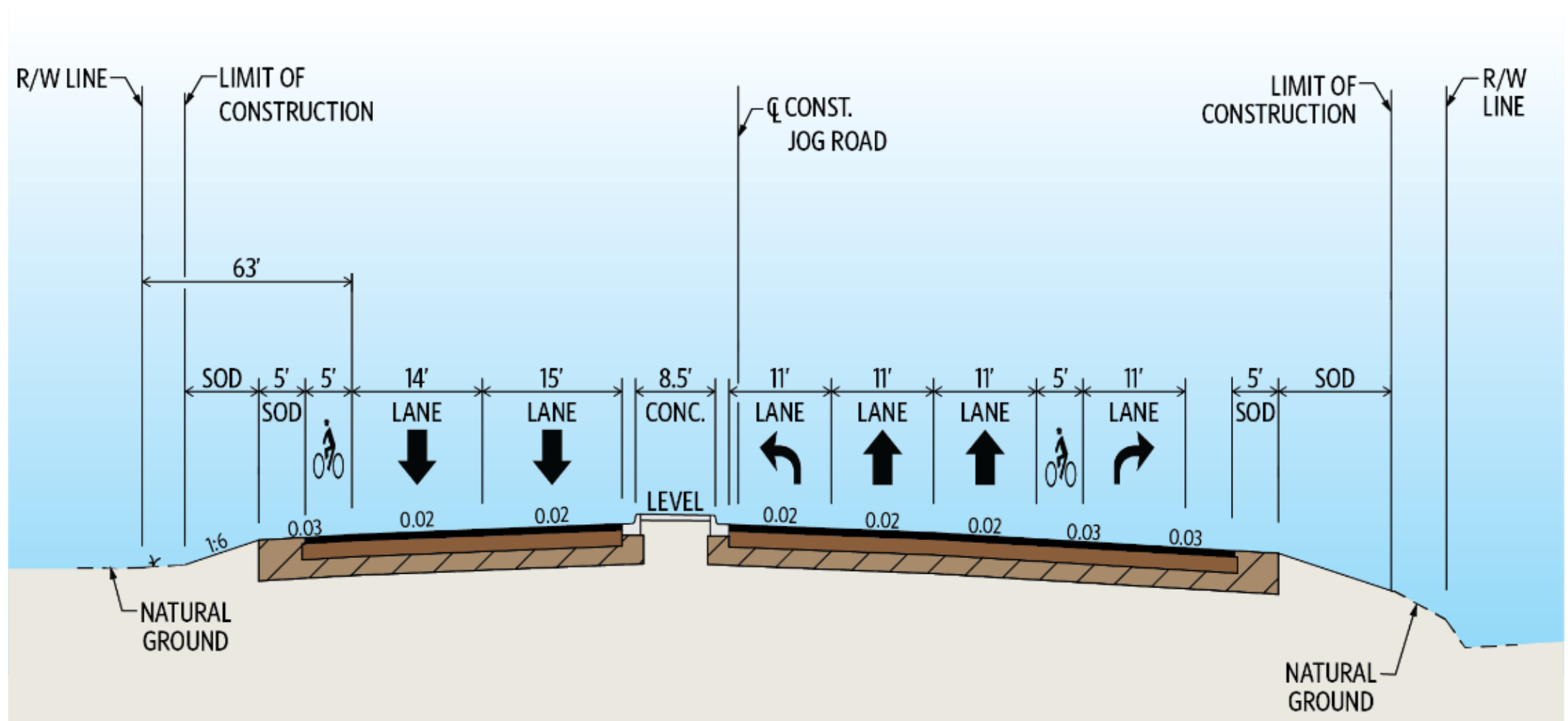
Florida Turnpike Mainline



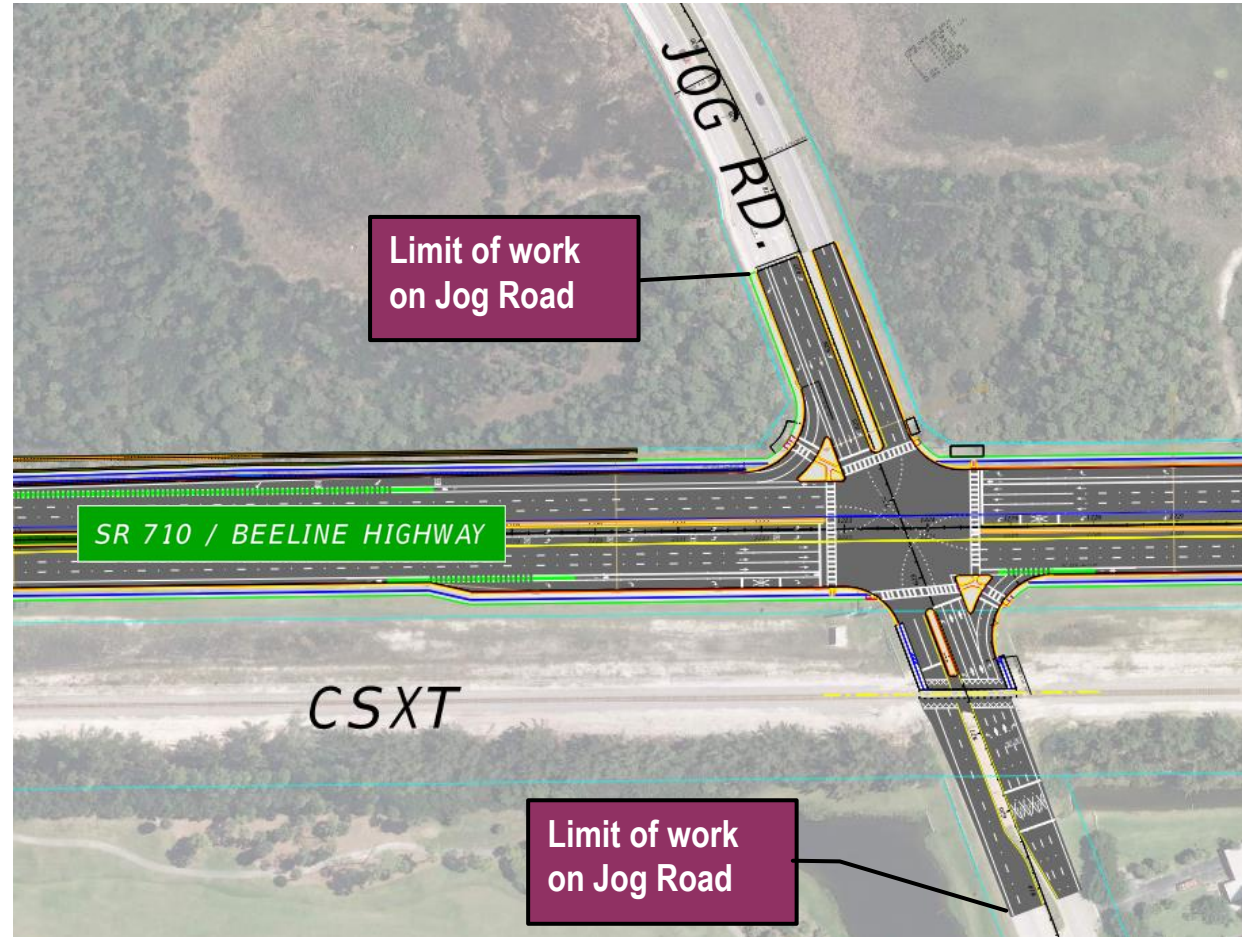
SR 710 at the Florida Turnpike



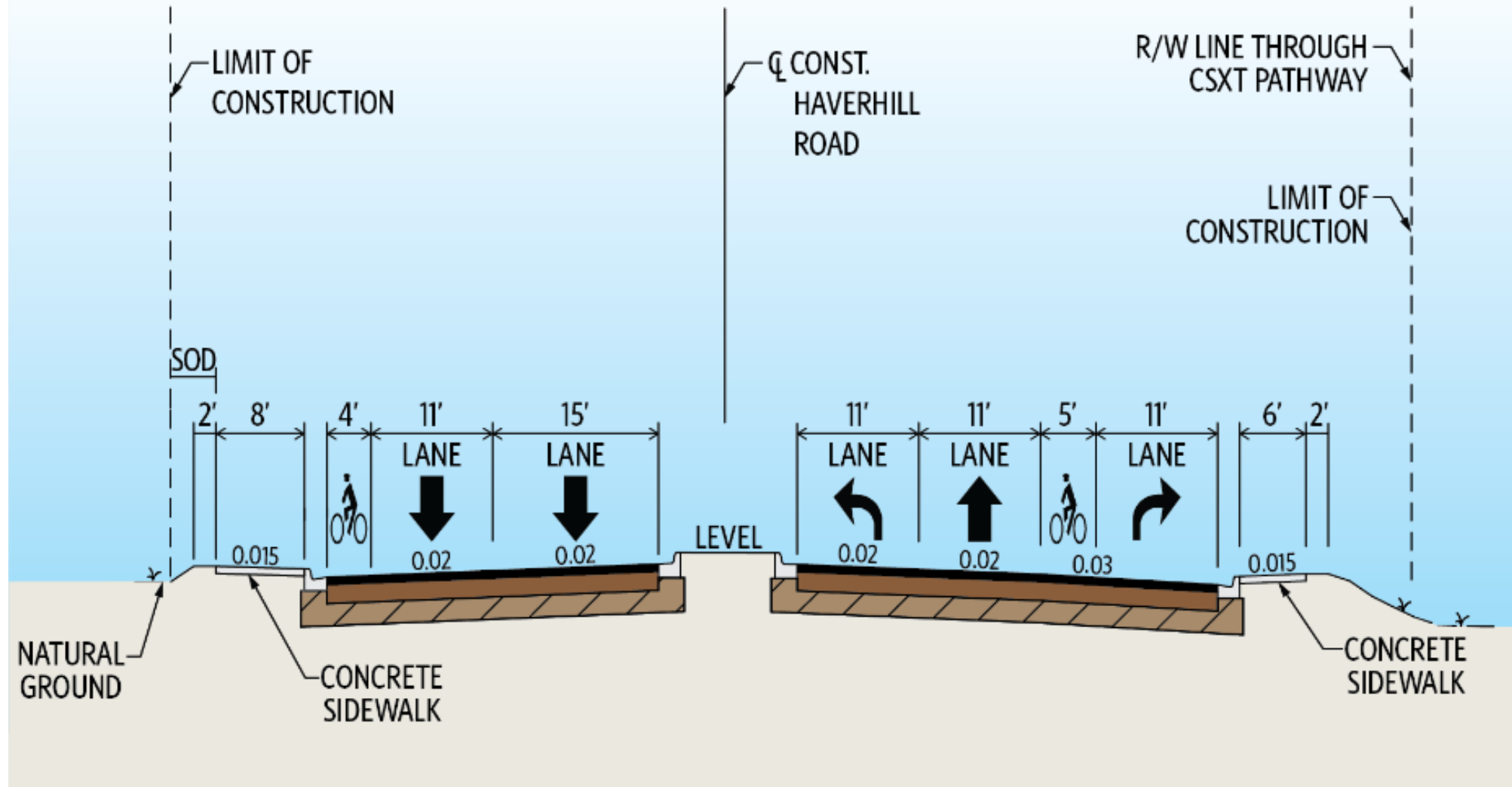
Jog Road



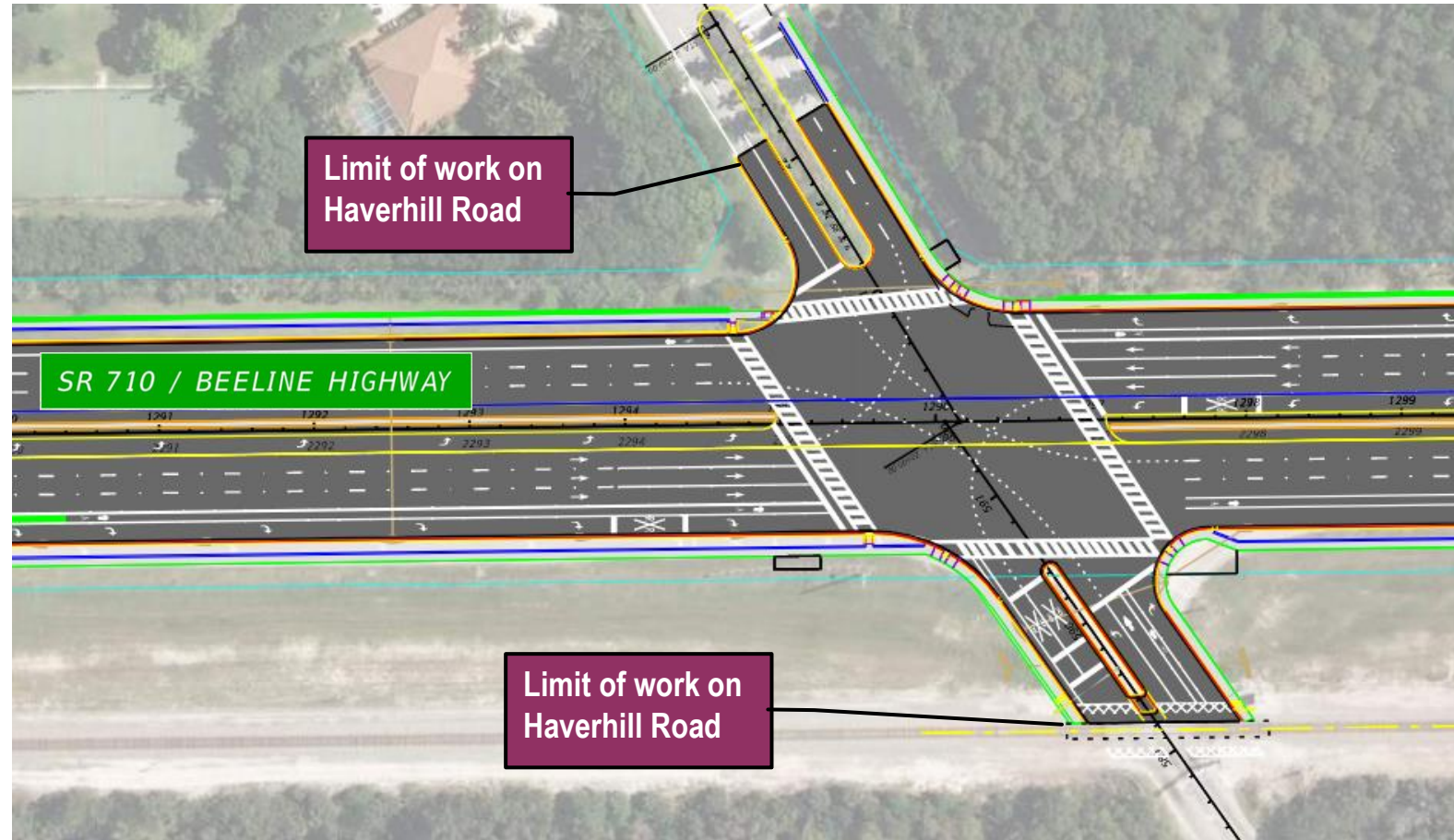
SR 710 at the Jog Road Intersection



Haverhill Road Typical



SR 710 at the Haverhill Road Intersection



**8. ALL MOVEMENTS BETWEEN
SR 710/BEEELINE HIGHWAY AND NORTHLAKE
BOULEVARD**



9. PROJECT SCHEDULE

Project Schedule

- Final Design Complete – August 2022
- Construction Begin – Spring 2023
- Construction End – Spring 2026



10. PUBLIC COMMENTS, QUESTIONS AND ANSWERS

Submitting Comments or Questions

Online participants

1. Written - Type in **Question box** on **Control Panel**
2. Verbal - Request to speak:
 - a. Click **Raise Hand button** on **Control Panel**
 - b. Unmute your microphone when your name is called

Any participant

Use your telephone to call +1 (631) 992-3221

On upper left of
GoToWebinar
Control Panel



Public Comment Period

When your name is called to speak, please:

1. Unmute yourself
2. State your name and address
3. State your comment or question
(please limit to 3 minutes)

*You will not be
on camera.*

3:00

See GoToWebinar
Control Panel



11. CLOSING AND CONTACT INFORMATION

11. Closing and Contact Information



James Hughes, P.E.



James.Hughes@dot.state.fl.us



(954) 777-4419



**Florida Department of Transportation, District Four
3400 West Commercial Blvd.
Fort Lauderdale, FL 33309**

THANK YOU

Safety Message

