



# FLORIDA DEPARTMENT OF TRANSPORTATION INVITES YOU TO A CONSTRUCTION OPEN HOUSE

State Road (S.R.) A1A/Jimmy Buffett Memorial Highway Over Sebastian Inlet Bridge Replacement Project  
From south of the Sebastian Inlet in Indian River County to north of the Sebastian Inlet in Brevard County  
Indian River and Brevard Counties, FL  
Financial Project ID Number: 445618-1-52-01

## S.R. A1A/JIMMY BUFFETT MEMORIAL HIGHWAY OVER SEBASTIAN INLET BRIDGE REPLACEMENT PROJECT

The Florida Department of Transportation (FDOT) invites the community to a Virtual Public Meeting and In-Person Construction Open House regarding the S.R. A1A/Jimmy Buffett Memorial Highway Over Sebastian Inlet Bridge Replacement Project in Indian River and Brevard Counties. This project aims to enhance the safety, resiliency, and longevity of the infrastructure for our communities. Please see below for detailed meeting information.

**Construction Cost:** \$101.9 Million

**Construction Start:** June 2026

**Estimated Completion:** Spring 2032

### PROJECT IMPROVEMENTS

- Constructing a new fixed bridge east of the existing bridge with a vertical clearance of 51 feet, two 12-foot wide travel lanes, two 8-foot wide shoulders, and two 12-foot wide shared-use paths to enhance safety, long-term resiliency, and pedestrian connectivity.
- Constructing two observation decks, one under the bridge from the south shore and one under the bridge from the north shore to enhance recreational enjoyment for the community.
- Constructing crosswalks on S.R. A1A/Jimmy Buffett Memorial Highway at the State Park's north and south entrances to enhance safety and pedestrian connectivity.
- Reconfiguring the State Park's north and south entrances, including the addition of exiting right-turn lanes to improve traffic operations.
- Constructing a southbound acceleration lane on S.R. A1A/Jimmy Buffett Memorial Highway from the State Park's south entrance to improve traffic operations.
- Lengthening the southbound S.R. A1A/Jimmy Buffett Memorial Highway right-turn lane, north and south of the bridge into the State Park to improve traffic operations.
- Constructing a 12-foot wide shared-use path on both sides of the bridge and roadway to enhance safety and pedestrian connectivity.
- Milling and resurfacing the State Park's North and South Parking Lots to enhance long-term resiliency.

### TRAFFIC IMPACTS

- Single-lane closures are permitted daily, Monday through Thursday, from 7:00 a.m. to 5:00 p.m. and Friday, from 7:00 a.m. to 1:00 p.m. During these times, flaggers will maintain roadway traffic and access to the North Parking Lot.
- Marine traffic will be maintained, with advanced notice provided for temporary restrictions.
- Access to the South Parking Lot east of the bridge and access from the South Parking Lot to the south jetty will be closed during construction.
- Additional information about lane closures and detours will be provided in the weekly traffic report distributed by FDOT and can be viewed using the following link: [FDOT Treasure Coast Construction \(d4fdot.com\)](https://www.d4fdot.com).

### CONTACT INFORMATION

**Josh Baker — FDOT Project Manager**  
[joshua.baker@dot.state.fl.us](mailto:joshua.baker@dot.state.fl.us) or (772) 492-4930

**Bill Stuckey, P.E. — Senior Project Engineer**  
[bill.stuckey@consoreng.com](mailto:bill.stuckey@consoreng.com) or (407) 375-3783

**Samantha Kayser — Community Outreach Specialist**  
[skayser@corrado.com](mailto:skayser@corrado.com) or (772) 579-5479

### JOIN US AT THE CONSTRUCTION OPEN HOUSE

**Tuesday, May 19, 2026**

**Virtual Public Meeting (GoToWebinar)**

**5:00 p.m. to 6:00 p.m.**

Please use the following QR code or link to register: <https://bit.ly/InletBridge>

You may also call in at:

Phone number: +1 (562) 247-8422

Attendee access code: 414-375-878

- Presentations will begin promptly at 5:00 p.m. and 5:30 p.m.
- Question and Answer sessions will follow each presentation.



**Tuesday, May 19, 2026**

**In-Person Construction Open House**

**6:00 p.m. to 7:00 p.m.**

**will be held at:**

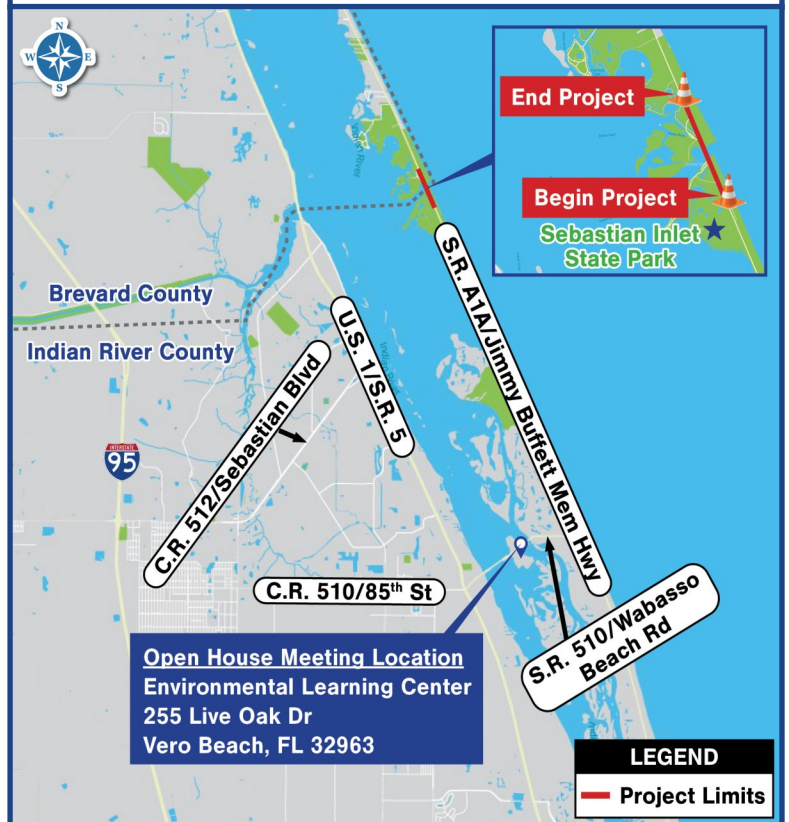
Environmental Learning Center

The Lagoon Room

255 Live Oak Drive

Vero Beach, FL 32963

- Project personnel will be available to review the project scope and schedule, lane closure information, and address questions one-on-one.



### WEBSITE AND SOCIAL MEDIA

**X/Instagram:** @MyFDOT\_SEFL

**Facebook:** @MyFDOTSEFL

**Project website:** [www.d4fdot.com](http://www.d4fdot.com)



### FLORIDA DEPARTMENT OF TRANSPORTATION MISSION STATEMENT

The Florida Department of Transportation's mission is to provide a safe statewide transportation system that promotes the efficient movement of people and goods, supports the state's economic competitiveness, prioritizes Florida's environment and natural resources, and preserves the quality of life and connectedness of the state's communities.

Please contact the Community Outreach Specialist, Samantha Kayser, to be added to project email notification lists. If special accommodations under the Americans with Disabilities Act (ADA) or translation services (free of charge) are needed, please contact the Project Manager, Josh Baker, at least seven (7) days prior to the Meeting. Public participation is solicited without regard to race, color, national origin, age, sex, religion, disability, or family status. Para información y preguntas en Español, por favor llame al (954) 777-4302.